

Datasheet for ABIN1325750
ZFP37 Protein (AA 193-288) (GST tag)



[Go to Product page](#)

1 Image

Overview

Quantity:	10 µg
Target:	ZFP37
Protein Characteristics:	AA 193-288
Origin:	Human
Source:	Wheat germ
Protein Type:	Recombinant
Purification tag / Conjugate:	This ZFP37 protein is labelled with GST tag.
Application:	ELISA, Western Blotting (WB), Antibody Array (AA), Affinity Purification (AP)

Product Details

Purpose:	ZFP37 (Human) Recombinant Protein (Q01)
Sequence:	HSRNCVKRKS DAAKEHKKSF NHLSLSDTRKG KKQTGKKHEK LSSHSSSDKC NKTGKKHDKL CCHSSSHIKQ DKIQTGKHE KSPSLSSSTK HEKPQA
Characteristics:	Human ZFP37 partial ORF (NP_003399.1, 193 a.a. - 288 a.a.) recombinant protein with GST-tag at N-terminal.
Purification:	in vitro wheat germ expression system

Target Details

Target:	ZFP37
Alternative Name:	ZFP37 (ZFP37 Products)

Target Details

Background:	Full Gene Name: zinc finger protein 37 homolog (mouse) Synonyms: FLJ38524
Gene ID:	7539
NCBI Accession:	NM_003408

Application Details

Application Notes:	Optimal working dilution should be determined by the investigator.
Comment:	Preparation method: in vitro, wheat germ expression system Product Quality tested by: 12.5% SDS-PAGE Stained with Coomassie Blue.
Restrictions:	For Research Use only

Handling

Buffer:	50 mM Tris-HCl, 10 mM reduced Glutathione, pH =8.0 in the elution buffer.
Handling Advice:	Aliquot to avoid repeated freezing and thawing.
Storage:	-80 °C
Storage Comment:	Best use within three months from the date of receipt of this protein.

Images

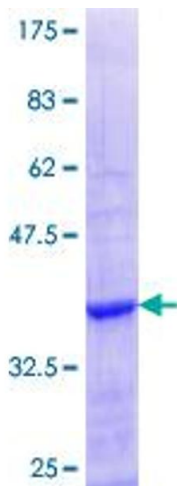


Image 1.