



[Go to Product page](#)

Datasheet for ABIN1325760

## ZFPL1 Protein (AA 1-310) (GST tag)

### 1 Image

#### Overview

Quantity:	10 µg
Target:	ZFPL1
Protein Characteristics:	AA 1-310
Origin:	Human
Source:	Wheat germ
Protein Type:	Recombinant
Purification tag / Conjugate:	This ZFPL1 protein is labelled with GST tag.
Application:	ELISA, Western Blotting (WB), Antibody Array (AA), Affinity Purification (AP)

#### Product Details

Purpose:	ZFPL1 (Human) Recombinant Protein (P01)
Sequence:	MGLCKCPKRK VTNLFCFEHR VNVCEHCLVA NHAKCIVQSY LQWLQSDYN PNCRLCNIPL ASRETRLVC YDLFWACLN ERAAQLPRNT APAGYQCPCSC NGPIFPPTNL AGPVASALRE KLATVNWARA GLGLPLIDEV VSPEPEPLNT SDFS DWSSFN ASSTPGPEEV DSASAAPAFY SQAPRPPASP GRPEQHTVIH MGNPEPLTHA PRKVYDTRDD DRTPGLHGDC DDDKYRRRPA LGWLARLLRS RAGSRKRPLT LLQRAGLLLL LGLLGFLALL ALMSRLGRAA ADSDPNLDPL MNPHIRVGPS
Characteristics:	Human ZFPL1 full-length ORF ( NP_006773.2, 1 a.a. - 310 a.a.) recombinant protein with GST-tag at N-terminal.
Purification:	in vitro wheat germ expression system

## Target Details

Target:	ZFPL1
Alternative Name:	ZFPL1 ( <a href="#">ZFPL1 Products</a> )
Background:	Full Gene Name: zinc finger protein-like 1 Synonyms: D11S750,MCG4
Gene ID:	7542
NCBI Accession:	<a href="#">NM_006782</a>

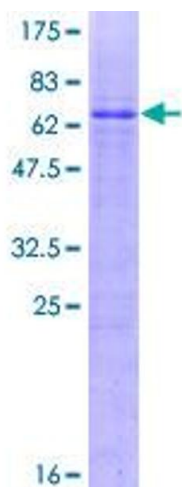
## Application Details

Application Notes:	Optimal working dilution should be determined by the investigator.
Comment:	Preparation method: in vitro, wheat germ expression system Product Quality tested by: 12.5% SDS-PAGE Stained with Coomassie Blue.
Restrictions:	For Research Use only

## Handling

Buffer:	50 mM Tris-HCl, 10 mM reduced Glutathione, pH =8.0 in the elution buffer.
Handling Advice:	Aliquot to avoid repeated freezing and thawing.
Storage:	-80 °C
Storage Comment:	Best use within three months from the date of receipt of this protein.

## Images



**Image 1.**