



[Go to Product page](#)

Datasheet for ABIN1325766

ZFYVE1 Protein (AA 1-99) (GST tag)

1 Image

Overview

Quantity:	10 µg
Target:	ZFYVE1
Protein Characteristics:	AA 1-99
Origin:	Human
Source:	Wheat germ
Protein Type:	Recombinant
Purification tag / Conjugate:	This ZFYVE1 protein is labelled with GST tag.
Application:	ELISA, Western Blotting (WB), Antibody Array (AA), Affinity Purification (AP)

Product Details

Purpose:	ZFYVE1 (Human) Recombinant Protein (Q01)
Sequence:	MSAQTSPA EK GLNPGLMCQE SYACSGTDEA IFECDECCSL QCLRCEEELH RQERLRNHER IRLKPGHVPY CDLCKGLSGH LPGVRQRAIV RCQTCKINL
Characteristics:	Human ZFYVE1 partial ORF (NP_067083.1, 1 a.a. - 99 a.a.) recombinant protein with GST-tag at N-terminal.
Purification:	in vitro wheat germ expression system

Target Details

Target:	ZFYVE1
Alternative Name:	ZFYVE1 (ZFYVE1 Products)

Target Details

Background:	Full Gene Name: zinc finger, FYVE domain containing 1 Synonyms: DFCP1,KIAA1589,TAFF1,ZNFN2A1
Gene ID:	53349
NCBI Accession:	NM_021260

Application Details

Application Notes:	Optimal working dilution should be determined by the investigator.
Comment:	Preparation method: in vitro, wheat germ expression system Product Quality tested by: 12.5% SDS-PAGE Stained with Coomassie Blue.
Restrictions:	For Research Use only

Handling

Buffer:	50 mM Tris-HCl, 10 mM reduced Glutathione, pH =8.0 in the elution buffer.
Handling Advice:	Aliquot to avoid repeated freezing and thawing.
Storage:	-80 °C
Storage Comment:	Best use within three months from the date of receipt of this protein.

Images

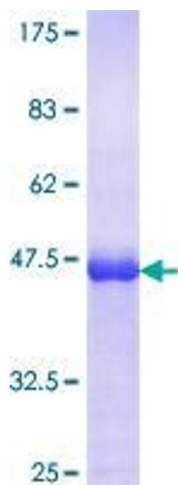


Image 1.