

Datasheet for ABIN1325768  
**ZFYVE16 Protein (AA 1-809) (GST tag)**



[Go to Product page](#)

1 Image

Overview

Quantity:	10 µg
Target:	ZFYVE16
Protein Characteristics:	AA 1-809
Origin:	Human
Source:	Wheat germ
Protein Type:	Recombinant
Purification tag / Conjugate:	This ZFYVE16 protein is labelled with GST tag.
Application:	ELISA, Western Blotting (WB), Antibody Array (AA), Affinity Purification (AP)

Product Details

Purpose:	ZFYVE16 (Human) Recombinant Protein (P01)
Sequence:	MDSYFKA AVS DLDKLLDDFE QNPDEQDY LQ DVQ NAYDSNH CSVSSE LASS QRTSLLPKDQ ECVNSCASSE TSYGTNESSL NKKTLKGLTS IQNEKNVTGL DLLSSVDGGT SDEIQPLYMG RCSKPIDLI SDMGNLVHAT NSEEDIKLL PDDFKSNADS LIGLDLSSVS DTPCVSSTDH DSDTVREQQN DTSSSELQ NRE IGGIKELGIK VDTTLLSDSYN YSGTENLKDK KIFNQLESIV DFNMSSALTR QSSKMFHAKD KLQHKSQPCG LLKDVGLVKE EVDVAVITAA ECLKEEGKTS ALTCSLPKNE DLCLNDSNSR DENFKLPDFS FQEDKTVIKQ SAQEDSKSLD LKDNDVIQDS SSALHVSSKD VPSSL SCLPA SGSMCGSLIE SKARGDFLPQ HEHKDNIQDA VTIHEEIQNS VVLGGEPFKE NDLLKQEKCK SILLQSLIEG MEDRKIDPDQ TVIRAESLDG GDTSSSTVVE QEGLSGTHVP ESSDCCEGFI NTFSSNDMDG QLDLYFNIDE GAKSGPLISD AELDAFLTEQ YLQTTNIKSF EENVNDSKSQ MNQIDMKGLD DGNINNIYFN AEAGAIGESH GINIICETVD KQNTIENGLS LGEKSTIPVQ QGLPTSKSEI TNQLSVSDIN SQSVGGARPK QLFSLPSRTR

## Product Details

---

SSKDLNKPDV PDTIESEPST ADTVVPITCA IDSTADPQVS FNSNYIDIES NSEGGSSFVT  
ANEDSVPEPT CKEGLVLGQK QPTWVPDSEA PNCMNCQVKF TFTKRRHHCR ACGKVFCGVC  
CNRKCKLQYL EKEARVCVVC YETISKGEC

Characteristics: Human ZFYVE16 full-length ORF ( AAH30808.1, 1 a.a. - 809 a.a.) recombinant protein with GST-tag at N-terminal.

Purification: in vitro wheat germ expression system

## Target Details

---

Target: ZFYVE16

Alternative Name: ZFYVE16 ([ZFYVE16 Products](#))

Background: Full Gene Name: zinc finger, FYVE domain containing 16  
Synonyms: DKFZp686E13162, ENDOFIN, KIAA0305

Gene ID: 9765

## Application Details

---

Application Notes: Optimal working dilution should be determined by the investigator.

Comment: Preparation method: in vitro, wheat germ expression system  
Product Quality tested by: 12.5% SDS-PAGE Stained with Coomassie Blue.

Restrictions: For Research Use only

## Handling

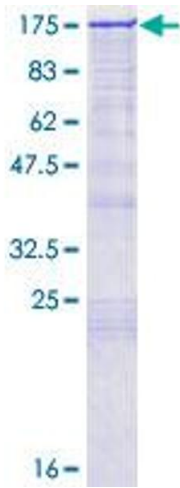
---

Buffer: 50 mM Tris-HCl, 10 mM reduced Glutathione, pH =8.0 in the elution buffer.

Handling Advice: Aliquot to avoid repeated freezing and thawing.

Storage: -80 °C

Storage Comment: Best use within three months from the date of receipt of this protein.



**Image 1.**