



[Go to Product page](#)

Datasheet for ABIN1325772

ZFYVE19 Protein (AA 1-396) (GST tag)

1 Image

Overview

Quantity:	10 µg
Target:	ZFYVE19
Protein Characteristics:	AA 1-396
Origin:	Human
Source:	Wheat germ
Protein Type:	Recombinant
Purification tag / Conjugate:	This ZFYVE19 protein is labelled with GST tag.
Application:	ELISA, Western Blotting (WB), Antibody Array (AA), Affinity Purification (AP)

Product Details

Purpose:	ZFYVE19 (Human) Recombinant Protein (P01)
Sequence:	MESRCYGCAV KFTLFKKEYG CKNCGRAFCS GCLSFSAAVP RTGNTQQKVC KQCHEVLTRG SSANASKWSP PQNYKKRVAA LEAKQKPSTS QSQGLTRQDQ MIAERLARLR QENKPKLVPS QAEIEARLAA LKDERQGSIP STQEMEARLA ALQGRVLPSQ TPQPAHHTPD TRTQAQQTQD LLTQLAAEVA IDESWKGGGP AASLQNDLNQ GPGSTNSKR QANWSLEEEK SLLAEAALE LREENTRQER ILALAKRLAM LRGQDPERVT LQDYRLPDS DDEDEETAIQ RVLQQLTEEA ALDEASGFNI PAEQASRPWT QPRGAEPEAQ DVDPRPEAEE EELPWCCICN EDATLRCAGC DGDLCARCF REGHDAFELK EHQTSAYSPP RAGQEH
Characteristics:	Human ZFYVE19 full-length ORF (AAH15738.1, 1 a.a. - 396 a.a.) recombinant protein with GST-tag at N-terminal.
Purification:	in vitro wheat germ expression system

Target Details

Target:	ZFYVE19
Alternative Name:	ZFYVE19 (ZFYVE19 Products)
Background:	Full Gene Name: zinc finger, FYVE domain containing 19 Synonyms: FLJ14840,MPFYVE
Gene ID:	84936

Application Details

Application Notes:	Optimal working dilution should be determined by the investigator.
Comment:	Preparation method: in vitro, wheat germ expression system Product Quality tested by: 12.5% SDS-PAGE Stained with Coomassie Blue.
Restrictions:	For Research Use only

Handling

Buffer:	50 mM Tris-HCl, 10 mM reduced Glutathione, pH =8.0 in the elution buffer.
Handling Advice:	Aliquot to avoid repeated freezing and thawing.
Storage:	-80 °C
Storage Comment:	Best use within three months from the date of receipt of this protein.

Images

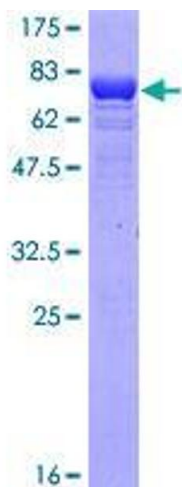


Image 1.