



[Go to Product page](#)

Datasheet for ABIN1325781

## ZHX1 Protein (AA 731-829) (GST tag)

### 1 Image

#### Overview

Quantity:	10 µg
Target:	ZHX1
Protein Characteristics:	AA 731-829
Origin:	Human
Source:	Wheat germ
Protein Type:	Recombinant
Purification tag / Conjugate:	This ZHX1 protein is labelled with GST tag.
Application:	ELISA, Western Blotting (WB), Antibody Array (AA), Affinity Purification (AP)

#### Product Details

Purpose:	ZHX1 (Human) Recombinant Protein (Q01)
Sequence:	SSSMNGLSSL RKRGRGRPKG RGRGRPRGRP RGSKRINNWD RGPSLIKFKT GTAILKDYYL KRKFLNEQDL DELVNKSHMG YEQVREWFAE RQRRSELGI
Characteristics:	Human ZHX1 partial ORF ( NP_009153, 731 a.a. - 829 a.a.) recombinant protein with GST-tag at N-terminal.
Purification:	in vitro wheat germ expression system

#### Target Details

Target:	ZHX1
Alternative Name:	ZHX1 ( <a href="#">ZHX1 Products</a> )

## Target Details

Background:	Full Gene Name: zinc fingers and homeoboxes 1 Synonyms:
Gene ID:	11244
NCBI Accession:	<a href="#">NM_007222</a>

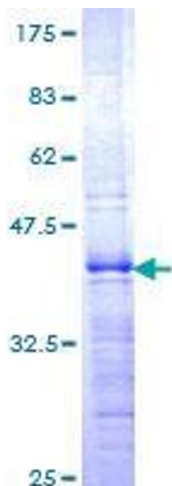
## Application Details

Application Notes:	Optimal working dilution should be determined by the investigator.
Comment:	Preparation method: in vitro, wheat germ expression system Product Quality tested by: 12.5% SDS-PAGE Stained with Coomassie Blue.
Restrictions:	For Research Use only

## Handling

Buffer:	50 mM Tris-HCl, 10 mM reduced Glutathione, pH =8.0 in the elution buffer.
Handling Advice:	Aliquot to avoid repeated freezing and thawing.
Storage:	-80 °C
Storage Comment:	Best use within three months from the date of receipt of this protein.

## Images



**Image 1.**