



[Go to Product page](#)

Datasheet for ABIN1325785

ZHX3 Protein (AA 1-969) (GST tag)

1 Image

Overview

Quantity:	25 µg
Target:	ZHX3
Protein Characteristics:	AA 1-969
Origin:	Human
Source:	Wheat germ
Protein Type:	Recombinant
Purification tag / Conjugate:	This ZHX3 protein is labelled with GST tag.
Application:	ELISA, Western Blotting (WB), Antibody Array (AA), Affinity Purification (AP)

Product Details

Purpose:	ZHX3 (Human) Recombinant Protein (P01)
Sequence:	<p>MASKRKSTTP CMIPVKTVVL QDASMEAQPA ETLPEGPQQD LPPEASAASS EAAQNPSSTD GSTLANGHRS TLDGYLYSCK YCDFRSHDMT QFVGHMNSEH TDFNKDPTFV CSGCSFLAKT PEGLSLHNAT CHSGEASFVW NVAKPDNHVV VEQSIPESTS TPDLAGEPSA EGADGQAEII ITKTPIMKIM KGKAEAKKIH TLKENVPSQP VGEALPKLST GEMEVREGDH SFINGAVPVS QASASSAKNP HAANGPLIGT VPVLPAGIAQ FLSLQQPPV HAQHHVHQPL PTAKALPKVM IPLSSIPTYN AAMDSNSFLK NSFHKFPYPT KAELCYLTVV TKYPEEQLKI WFTAQRLKQG ISWSPEEIED ARKKMFNTVI QSVQPQTITV LNTPLVASAG NVQHLIQAAL PGHVVGQPEG TGGGLLVTPQ LMANGLQATS SPLPLTVTSV PKQPGVAPIN TVCSNTTSAV KVVNAAQSL TACPSITSQA FLDASIYKNK KSHEQLSALK GSFCRNQFPG QSEVEHLTKV TGLSTREVRK WFSDRRYHCR NLKGSRAMIP GDHSSIIIDS VPEVSFSPSS KVPEVTCIPT TATLATHPSA KRQSWHQTPD FTPTKYKERA PEQLRALESS FAQNPLPLDE EMDRLRSETK MTRREIDSWF</p>

Product Details

SERRKKVNAE ETKKAEENAS QEEEEAAEDE GGEEDLASEL RVSGENGSL E MPSSHILAER
KVSPKINLK NLRVTEANGR NEIPGLGACD PEDDESNKLA EQLPGKVSCK KTAQQRHLLR
QLFVQTQWPS NQDYDSIM AQ TGLPRPEVVR WFGDSRYALK NGQLKWYEDY KRGNFPPGLL
VIAPGNRELL QDYDMTHKML YEEDLQNLCD KTQMSSQQKQ TEFDLINVKD WPVWETACHV
EENPTLCCH MPFPCPAAGH LGELPESSQT AQLPLPSAC PPPSKQARW GSHQFFLPQC
RTFPLPSNG

Characteristics: Human ZHX3 full-length ORF (AAH68569.1, 1 a.a. - 969 a.a.) recombinant protein with GST-tag at N-terminal.

Purification: in vitro wheat germ expression system

Target Details

Target: ZHX3

Alternative Name: ZHX3 ([ZHX3 Products](#))

Background: Full Gene Name: zinc fingers and homeoboxes 3
Synonyms: KIAA0395,TIX1

Gene ID: 23051

Application Details

Application Notes: Optimal working dilution should be determined by the investigator.

Comment: Preparation method: in vitro, wheat germ expression system
Product Quality tested by: 12.5% SDS-PAGE Stained with Coomassie Blue.

Restrictions: For Research Use only

Handling

Buffer: 50 mM Tris-HCl, 10 mM reduced Glutathione, pH =8.0 in the elution buffer.

Handling Advice: Aliquot to avoid repeated freezing and thawing.

Storage: -80 °C

Storage Comment: Best use within three months from the date of receipt of this protein.

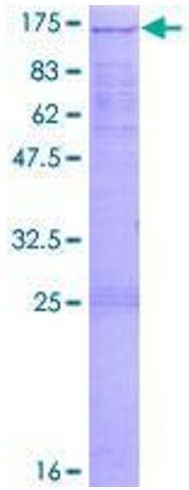


Image 1.