

Datasheet for ABIN1325820  
**ZMAT2 Protein (AA 1-199) (GST tag)**



[Go to Product page](#)

1 Image

Overview

Quantity:	10 µg
Target:	ZMAT2
Protein Characteristics:	AA 1-199
Origin:	Human
Source:	Wheat germ
Protein Type:	Recombinant
Purification tag / Conjugate:	This ZMAT2 protein is labelled with GST tag.
Application:	ELISA, Western Blotting (WB), Antibody Array (AA), Affinity Purification (AP)

Product Details

Purpose:	ZMAT2 (Human) Recombinant Protein (P01)
Sequence:	MASGSGTKNL DFRRKWDKDE YEKLAEKRLT EEREKKGKGP VQPVKRELLR HRDYKVDLES KLGKTIVITK TTPQSEMGY YCNVDCVVK DSINFLDHIN GKKHQRNLMG SMRVERSTLD QVKKRFEVVK KKMEEKQKDY DFEERMKELR EEEEKAKAYK KEKQKEKKRR AEEDLTFEED DEMAAVMGFS GFGSTKKS
Characteristics:	Human ZMAT2 full-length ORF ( NP_653324.1, 1 a.a. - 199 a.a.) recombinant protein with GST-tag at N-terminal.
Purification:	in vitro wheat germ expression system

Target Details

Target:	ZMAT2
---------	-------

## Target Details

Alternative Name:	ZMAT2 ( <a href="#">ZMAT2 Products</a> )
Background:	Full Gene Name: zinc finger, matrin type 2 Synonyms: FLJ31121
Gene ID:	153527
NCBI Accession:	<a href="#">NM_144723</a>

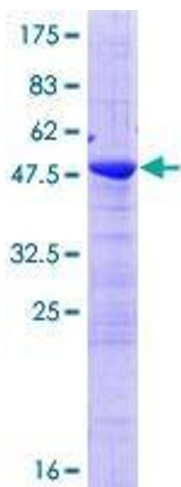
## Application Details

Application Notes:	Optimal working dilution should be determined by the investigator.
Comment:	Preparation method: in vitro, wheat germ expression system Product Quality tested by: 12.5% SDS-PAGE Stained with Coomassie Blue.
Restrictions:	For Research Use only

## Handling

Buffer:	50 mM Tris-HCl, 10 mM reduced Glutathione, pH =8.0 in the elution buffer.
Handling Advice:	Aliquot to avoid repeated freezing and thawing.
Storage:	-80 °C
Storage Comment:	Best use within three months from the date of receipt of this protein.

## Images



**Image 1.**