

Datasheet for ABIN1325829

ZMPSTE24 Protein (AA 1-475) (GST tag)[Go to Product page](#)**1** Image

Overview

Quantity:	10 µg
Target:	ZMPSTE24 (Zmpste24)
Protein Characteristics:	AA 1-475
Origin:	Human
Source:	Wheat germ
Protein Type:	Recombinant
Purification tag / Conjugate:	This ZMPSTE24 protein is labelled with GST tag.
Application:	Western Blotting (WB), ELISA, Antibody Array (AA), Affinity Purification (AP)

Product Details

Purpose:	ZMPSTE24 (Human) Recombinant Protein (P01)
Sequence:	MGMWASLDAL WEMPAEKRF GAVLLFSWTV YLWETFLAQR QRRIYKTTTH VPPELGQIMD SETFEKSRLY QLDKSTFSFW SGLYSETEGT LILLFGGIPY LWRLSGRFCG YAGFGPEYEI TQSLVFLLLA TLFALAGLP WSLYNTFVIE EKHGFNQQTLL GFFMKDAIKK FVVTQCILLP VSSLLLYIIK IGGDYFFIYA WLFTLVVSLV LVTIYADYIA PLFDKFTPLP EGKLKEEIEV MAKSIDFPLT KVYVVEGSKR SSSHNAYFYG FFKNKRIVLF DTLLEEYSVL NKDIQEDSGM EPRNEEEGNS EEIKAKVKNK KQGCKNEEVL AVLGHELGHW KLGHTVKNII ISQMNSFLCF FLFAVLIGRK ELFAAFGFYD SQPTLIGLLI IFQFIFSPYN EVLSFCLTVL SRRFEFQADA FAKKLGKAKD LYSALIKLNK DNLGFPVSDW LFSMWHYSHP PLLERLQALK TMKQH
Characteristics:	Human ZMPSTE24 full-length ORF (AAH37283.1, 1 a.a. - 475 a.a.) recombinant protein with GST-tag at N-terminal.

Product Details

Purification: in vitro wheat germ expression system

Target Details

Target: ZMPSTE24 (Zmpste24)

Alternative Name: ZMPSTE24 ([Zmpste24 Products](#))

Background: Full Gene Name: zinc metallopeptidase (STE24 homolog, *S. cerevisiae*)
Synonyms: FACE-1,FACE1,FLJ14968,STE24,Ste24p

Gene ID: 10269

Application Details

Application Notes: Optimal working dilution should be determined by the investigator.

Comment: Preparation method: in vitro, wheat germ expression system
Product Quality tested by: 12.5% SDS-PAGE Stained with Coomassie Blue.

Restrictions: For Research Use only

Handling

Buffer: 50 mM Tris-HCl, 10 mM reduced Glutathione, pH =8.0 in the elution buffer.

Handling Advice: Aliquot to avoid repeated freezing and thawing.

Storage: -80 °C

Storage Comment: Best use within three months from the date of receipt of this protein.

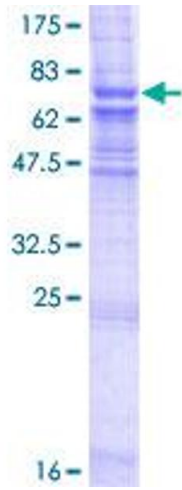


Image 1.