



[Go to Product page](#)

Datasheet for ABIN1325841

ZMYM6 Protein (AA 1-184) (GST tag)

1 Image

Overview

Quantity:	10 µg
Target:	ZMYM6
Protein Characteristics:	AA 1-184
Origin:	Human
Source:	Wheat germ
Protein Type:	Recombinant
Purification tag / Conjugate:	This ZMYM6 protein is labelled with GST tag.
Application:	ELISA, Western Blotting (WB), Antibody Array (AA), Affinity Purification (AP)

Product Details

Purpose:	ZMYM6 (Human) Recombinant Protein (P02)
Sequence:	MNSSVGD LGV GGCSLWDDPA RFIVVPAAYA LALGLGLPAN VAALAMFIRS GGRLGQALLL YLFNLALVDE FFTLTLQLWL TYLGLARRP PATRPGPPTT CPPMRRWSSP RSSACAAAAS YAVPGPGRLP AWPGAYGAPR ALPAPSPGWR AWPLPAWSTA GQARGWPPPR WPSRPPSCWC SRPT
Characteristics:	Human ZMYM6 full-length ORF (XP_937337.2, 1 a.a. - 184 a.a.) recombinant protein with GST-tag at N-terminal.
Purification:	in vitro wheat germ expression system

Target Details

Target:	ZMYM6
---------	-------

Target Details

Alternative Name:	ZMYM6 (ZMYM6 Products)
Background:	Gene: zinc finger, MYM-type 6 Synonyms: MYM, ZNF198L4, ZNF258
Gene ID:	9204
NCBI Accession:	XM_932244

Application Details

Application Notes:	Optimal working dilution should be determined by the investigator.
Restrictions:	For Research Use only

Handling

Buffer:	50 mM Tris-HCl, 10 mM reduced Glutathione, pH =8.0 in the elution buffer.
Handling Advice:	Aliquot to avoid repeated freezing and thawing.
Storage:	-80 °C
Storage Comment:	Best use within three months from the date of receipt of this protein.

Images

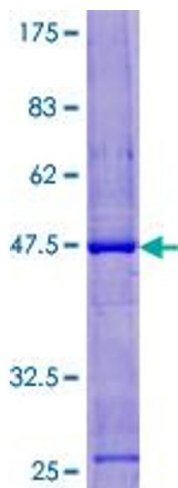


Image 1.