



[Go to Product page](#)

Datasheet for ABIN1325843

## ZMYND10 Protein (AA 1-440) (GST tag)

### 1 Image

#### Overview

Quantity:	25 µg
Target:	ZMYND10
Protein Characteristics:	AA 1-440
Origin:	Human
Source:	Wheat germ
Protein Type:	Recombinant
Purification tag / Conjugate:	This ZMYND10 protein is labelled with GST tag.
Application:	ELISA, Western Blotting (WB), Antibody Array (AA), Affinity Purification (AP)

#### Product Details

Purpose:	ZMYND10 (Human) Recombinant Protein (P01)
Sequence:	<p>MGDLELLLPG EAEVLVRGLR SFPLREMGSE GWNQQHENLE KLNMQAILDA TVSQGEPIQE</p> <p>LLVTHGKVPT LVEELIAVEM WKQKVFPVFC RVEDFKPQNT FPIYMMVHHE ASIINLLETV</p> <p>FFHKEVCESA EDTVLDLVDY CHRKLTLVA QSGCGGPPPEG EGSQDSNPMQ ELQKQAEELME</p> <p>FEIALKALSV LRYITDCVDS LSLSTLSRML STHNLPCLLV ELLEHSPWSR REGGKLQQFE</p> <p>GSRWHTVAPS EQQKLSKLDG QVWIALYNLL LSPEAQARYC LTSFAKGRLL KLRAFLTDTL</p> <p>LDQLPNLAHL QSFLAHLTLT ETQPPKKDLV LEIQPEIWER LERENRGKWQ AIAKHQLQHV</p> <p>FSPSEQDLRL QARRWAETYR LDVLEAVAPE RPRCAYCSAE ASKRCSRCQN EWYCCRECQV</p> <p>KHWEKHGKTC VLAAQGDRAK</p>
Characteristics:	Human ZMYND10 full-length ORF ( AAH33732, 1 a.a. - 440 a.a.) recombinant protein with GST-tag at N-terminal.

## Product Details

---

Purification: in vitro wheat germ expression system

## Target Details

---

Target: ZMYND10

Alternative Name: ZMYND10 ([ZMYND10 Products](#))

Background: Full Gene Name: zinc finger, MYND-type containing 10  
Synonyms: BLU,FLU

Gene ID: 51364

## Application Details

---

Application Notes: Optimal working dilution should be determined by the investigator.

Comment: Preparation method: in vitro, wheat germ expression system  
Product Quality tested by: 12.5% SDS-PAGE Stained with Coomassie Blue.

Restrictions: For Research Use only

## Handling

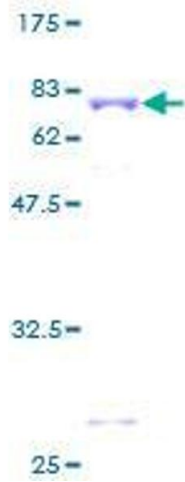
---

Buffer: 50 mM Tris-HCl, 10 mM reduced Glutathione, pH =8.0 in the elution buffer.

Handling Advice: Aliquot to avoid repeated freezing and thawing.

Storage: -80 °C

Storage Comment: Best use within three months from the date of receipt of this protein.



**Image 1.**