

Datasheet for ABIN1325953
ZNF192 Protein (AA 1-578) (GST tag)



[Go to Product page](#)

1 Image

Overview

Quantity:	10 µg
Target:	ZNF192
Protein Characteristics:	AA 1-578
Origin:	Human
Source:	Wheat germ
Protein Type:	Recombinant
Purification tag / Conjugate:	This ZNF192 protein is labelled with GST tag.
Application:	ELISA, Western Blotting (WB), Antibody Array (AA), Affinity Purification (AP)

Product Details

Purpose:	ZNF192 (Human) Recombinant Protein (P01)
Sequence:	MAEESRKPSA PSPPDQTPEE DLVIVKVEED HGWDQESSLH ESNPLGQEVF RLRFRQLRYQ ETLGPREALI QLRALCHQWL RPDLNTKEQI LELLVLEQFL TILPEELQTL VKEHQLENGE EVVTLLLEDLE RQIDILGRPVSARVHGHRVL WEEVVHSASA PEPNNTQLQS EATQHKSPVP QESQERAMST SQSPTRSQKG SSGDQEMTAT LLTAGFQTLE KIEDMAVSLI REEWLLDPSQ KDLCRDNRPE NFRNMFLGG ETRSENRELA SKQVISTGIQ PHGETAAKCN GDVIRGLEHE EARDLLGRLE RQRGNPTQER RHKCDECGKS FAQSSGLVRH WRIHTGEKPY QCNVCGKAFS YRSALLSHQD IHNKVKRYHC KECGKAFSQN TGLILHQRH TGEKPYQCNEQ CGKAFSQSAG LILHQRHSG ERPYECNECG KAFSSHSLI GHQRIHTGEK PYECDECGKT FRRSSHIGH QRSHTGEKPY KCNECGRAFS QKSGLIEHQR IHTGERPYKC KECGKAFNGN TGLIQHLRIH TGEKPYQCNE CGKAFIQRSS LIRHQRHSG EKSESISV
Characteristics:	Human ZNF192 full-length ORF (NP_006289.2, 1 a.a. - 578 a.a.) recombinant protein with GST-

Product Details

tag at N-terminal.

Purification: in vitro wheat germ expression system

Target Details

Target: ZNF192

Alternative Name: ZNF192 ([ZNF192 Products](#))

Background: Full Gene Name: zinc finger protein 192
Synonyms: LD5-1,ZKSCAN8

Gene ID: 7745

NCBI Accession: [NM_006298](#)

Application Details

Application Notes: Optimal working dilution should be determined by the investigator.

Comment: Preparation method: in vitro, wheat germ expression system
Product Quality tested by: 12.5% SDS-PAGE Stained with Coomassie Blue.

Restrictions: For Research Use only

Handling

Buffer: 50 mM Tris-HCl, 10 mM reduced Glutathione, pH =8.0 in the elution buffer.

Handling Advice: Aliquot to avoid repeated freezing and thawing.

Storage: -80 °C

Storage Comment: Best use within three months from the date of receipt of this protein.

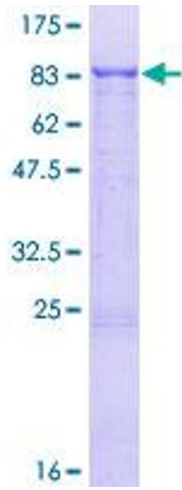


Image 1.