



[Go to Product page](#)

Datasheet for ABIN1326021

## ZNF253 Protein (AA 1-499) (GST tag)

### 1 Image

#### Overview

Quantity:	10 µg
Target:	ZNF253
Protein Characteristics:	AA 1-499
Origin:	Human
Source:	Wheat germ
Protein Type:	Recombinant
Purification tag / Conjugate:	This ZNF253 protein is labelled with GST tag.
Application:	ELISA, Western Blotting (WB), Antibody Array (AA), Affinity Purification (AP)

#### Product Details

Purpose:	ZNF253 (Human) Recombinant Protein (P01)
Sequence:	MGPLQFRDVA IEFSLLEEWHC LDTAQRNLYR DVMLENYRNL VFLGIVVSKP DLVTCLEQ GK KPLTMERHEM IAKPPVMSSH FAQDLWPENI QNSFQIGMLR RYEECRHDNL QLKKGCKSVG EHKVHKG GYN GLNQCLTTTQ KEIFQCDKYG KVFHKFSNSN TYKTRHTGIN LFKCII CGKA FKRSSTLTTH KKIHTGEKPY RCEECGKAFN QSANLTTHKR IHTGEKPYRC EECGKAFKQS SNLTTHKKIH TGEKPYKCEE CGKAFNRSTD LTTHKIVHTG EKP YKCEECG KAFKHPSHVT THKKIHTRGK PYNCEECGKS FKHC SNLTIH KRIHTGEKPY KCEECGKAFH LSSH LTTHKI LHTGEKPYRC RECGKAFNHS TTLFSHEKIH TGEKPYK CDE CGKTFTWPSI LSKHKRHTTG EKP YKCEECG KSFTASSTLT THKRIHTGEK PYKCEECGKA FNWSSDLNKH KKIHI ERKPY IVKNVTDLLN VPPL LISIR
Characteristics:	Human ZNF253 full-length ORF ( NP_066385.2, 1 a.a. - 499 a.a.) recombinant protein with GST-tag at N-terminal.

## Product Details

---

Purification: in vitro wheat germ expression system

## Target Details

---

Target: ZNF253

Alternative Name: ZNF253 ([ZNF253 Products](#))

Background: Full Gene Name: zinc finger protein 253  
Synonyms: BMZF-1,BMZF1,FLJ90391,ZNF411

Gene ID: 56242

NCBI Accession: [NM\\_021047](#)

## Application Details

---

Application Notes: Optimal working dilution should be determined by the investigator.

Comment: Preparation method: in vitro, wheat germ expression system  
Product Quality tested by: 12.5% SDS-PAGE Stained with Coomassie Blue.

Restrictions: For Research Use only

## Handling

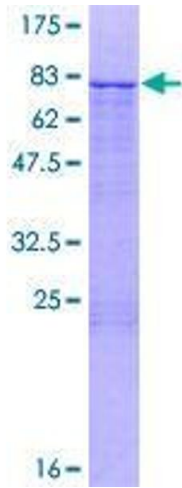
---

Buffer: 50 mM Tris-HCl, 10 mM reduced Glutathione, pH =8.0 in the elution buffer.

Handling Advice: Aliquot to avoid repeated freezing and thawing.

Storage: -80 °C

Storage Comment: Best use within three months from the date of receipt of this protein.



**Image 1.**