

Datasheet for ABIN1326030
ZNF256 Protein (AA 521-627) (GST tag)



[Go to Product page](#)

1 Image

Overview

Quantity:	10 µg
Target:	ZNF256
Protein Characteristics:	AA 521-627
Origin:	Human
Source:	Wheat germ
Protein Type:	Recombinant
Purification tag / Conjugate:	This ZNF256 protein is labelled with GST tag.
Application:	ELISA, Western Blotting (WB), Antibody Array (AA), Affinity Purification (AP)

Product Details

Purpose:	ZNF256 (Human) Recombinant Protein (Q01)
Sequence:	CNECGKFFSQ SSSLIRHRRS HTGERPYECS ECWKSFSNHS SLVKHRRVHT GERPYECSEC GKSFSQSSNL TNHQRHSRGE RPYECSDCGK FFTFNSNLLK HQNVHKG
Characteristics:	Human ZNF256 partial ORF (NP_005764.2, 521 a.a. - 627 a.a.) recombinant protein with GST-tag at N-terminal.
Purification:	in vitro wheat germ expression system

Target Details

Target:	ZNF256
Alternative Name:	ZNF256 (ZNF256 Products)

Target Details

Background: Full Gene Name: zinc finger protein 256
Synonyms: BMZF-3,BMZF3

Gene ID: 10172

NCBI Accession: [NM_005773](#)

Application Details

Application Notes: Optimal working dilution should be determined by the investigator.

Comment: Preparation method: in vitro, wheat germ expression system
Product Quality tested by: 12.5% SDS-PAGE Stained with Coomassie Blue.

Restrictions: For Research Use only

Handling

Buffer: 50 mM Tris-HCl, 10 mM reduced Glutathione, pH =8.0 in the elution buffer.

Handling Advice: Aliquot to avoid repeated freezing and thawing.

Storage: -80 °C

Storage Comment: Best use within three months from the date of receipt of this protein.

Images

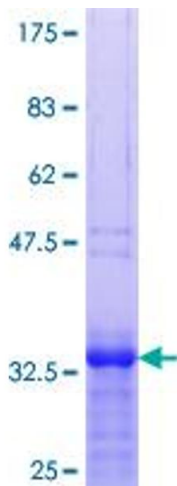


Image 1.