



[Go to Product page](#)

Datasheet for ABIN1326037

## ZNF26 Protein (AA 1-199) (GST tag)

### 1 Image

#### Overview

Quantity:	10 µg
Target:	ZNF26
Protein Characteristics:	AA 1-199
Origin:	Human
Source:	Wheat germ
Protein Type:	Recombinant
Purification tag / Conjugate:	This ZNF26 protein is labelled with GST tag.
Application:	ELISA, Western Blotting (WB), Antibody Array (AA), Affinity Purification (AP)

#### Product Details

Purpose:	ZNF26 (Human) Recombinant Protein (P01)
Sequence:	MHTGEKPYQC SDCGKAFNMK TQLIVHQGVH TGNNPYQCGE CGKAFGRKEQ LTAHLRAHAG EKPYGCSECG KAFSSKSYLV IHRRTHTGER PYECLCERA FCGKSQLIIH QRTHSTEKPY ECNECEKAYP RKASLQIHQK THSGEKPFKC SEC GKAFSTQK SSLSEHQRVH TGEKPWKCSE CGKSFCWNSG LRIHRKTHK
Characteristics:	Human ZNF26 full-length ORF ( AAH08211.1, 1 a.a. - 199 a.a.) recombinant protein with GST-tag at N-terminal.
Purification:	in vitro wheat germ expression system

#### Target Details

Target:	ZNF26
---------	-------

## Target Details

---

Alternative Name:	ZNF26 ( <a href="#">ZNF26 Products</a> )
Background:	Full Gene Name: zinc finger protein 26 Synonyms: FLJ20755,KOX20
Gene ID:	7574

## Application Details

---

Application Notes:	Optimal working dilution should be determined by the investigator.
Comment:	Preparation method: in vitro, wheat germ expression system Product Quality tested by: 12.5% SDS-PAGE Stained with Coomassie Blue.
Restrictions:	For Research Use only

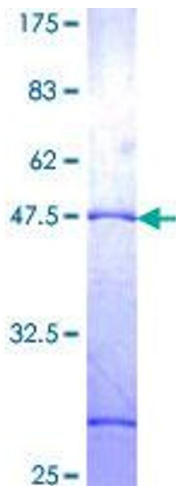
## Handling

---

Buffer:	50 mM Tris-HCl, 10 mM reduced Glutathione, pH =8.0 in the elution buffer.
Handling Advice:	Aliquot to avoid repeated freezing and thawing.
Storage:	-80 °C
Storage Comment:	Best use within three months from the date of receipt of this protein.

## Images

---



**Image 1.**