



[Go to Product page](#)

Datasheet for ABIN1326061
ZNF276 Protein (AA 12-111) (GST tag)

1 Image

Overview

Quantity:	10 µg
Target:	ZNF276
Protein Characteristics:	AA 12-111
Origin:	Human
Source:	Wheat germ
Protein Type:	Recombinant
Purification tag / Conjugate:	This ZNF276 protein is labelled with GST tag.
Application:	ELISA, Western Blotting (WB), Antibody Array (AA), Affinity Purification (AP)

Product Details

Purpose:	ZFP276 (Human) Recombinant Protein (Q01)
Sequence:	SSRSLRSISE RAPGASMERP SAEERVLVRD FQRLLGVAVR QDPTLSPFVC KSCHAQFYQC HSLKLSFLQR VNASPAGRRK PCAKVGAQPP TGAEEGACLV
Characteristics:	Human ZFP276 partial ORF (NP_689500.2, 12 a.a. - 111 a.a.) recombinant protein with GST-tag at N-terminal.
Purification:	in vitro wheat germ expression system

Target Details

Target:	ZNF276
Alternative Name:	ZNF276 (ZNF276 Products)

Target Details

Background:	Gene: zinc finger protein 276 Synonyms: FLJ38685, FLJ77809, MGC111410, MGC126480, MGC45417, ZFP276, ZNF477
Gene ID:	92822
NCBI Accession:	NM_152287

Application Details

Application Notes:	Optimal working dilution should be determined by the investigator.
Restrictions:	For Research Use only

Handling

Buffer:	50 mM Tris-HCl, 10 mM reduced Glutathione, pH =8.0 in the elution buffer.
Handling Advice:	Aliquot to avoid repeated freezing and thawing.
Storage:	-80 °C
Storage Comment:	Best use within three months from the date of receipt of this protein.

Images

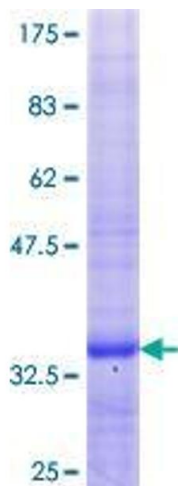


Image 1.