



[Go to Product page](#)

Datasheet for ABIN1326070

ZNF280D Protein (AA 1-158) (GST tag)

1 Image

Overview

Quantity:	10 µg
Target:	ZNF280D
Protein Characteristics:	AA 1-158
Origin:	Human
Source:	Wheat germ
Protein Type:	Recombinant
Purification tag / Conjugate:	This ZNF280D protein is labelled with GST tag.
Application:	ELISA, Western Blotting (WB), Antibody Array (AA), Affinity Purification (AP)

Product Details

Purpose:	SUHW4 (Human) Recombinant Protein (P01)
Sequence:	MGDNPFPQPKS NSKMAELFME CEEEELEPWQ KKVKEVEDDD DDEPIFVGEI SSSKPAISNI LNRVNPSSYS RGLKNGALSR GITAAFKPTS QHYTNPTSNP VPASPINFHP ESRSSDSSVI VQPFKPVSV SKTIRPAQGS IGCCLISITV PSYNSGLS
Characteristics:	Human SUHW4 full-length ORF (NP_001002844.1, 1 a.a. - 158 a.a.) recombinant protein with GST-tag at N-terminal.
Purification:	in vitro wheat germ expression system

Target Details

Target:	ZNF280D
Alternative Name:	ZNF280D (ZNF280D Products)

Target Details

Background:	Full Gene Name: zinc finger protein 280D Synonyms: MGC21637,MGC61687,SUHW4,ZNF634
Gene ID:	54816
NCBI Accession:	NM_001002844

Application Details

Application Notes:	Optimal working dilution should be determined by the investigator.
Comment:	Preparation method: in vitro, wheat germ expression system Product Quality tested by: 12.5% SDS-PAGE Stained with Coomassie Blue.
Restrictions:	For Research Use only

Handling

Buffer:	50 mM Tris-HCl, 10 mM reduced Glutathione, pH =8.0 in the elution buffer.
Handling Advice:	Aliquot to avoid repeated freezing and thawing.
Storage:	-80 °C
Storage Comment:	Best use within three months from the date of receipt of this protein.

Images

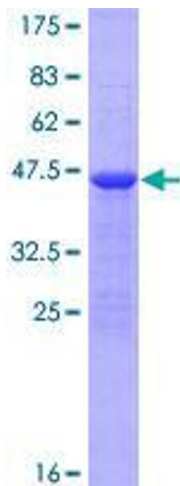


Image 1.