

Datasheet for ABIN1326107
ZNF326 Protein (AA 1-582) (GST tag)



[Go to Product page](#)

1 Image

Overview

Quantity:	25 µg
Target:	ZNF326
Protein Characteristics:	AA 1-582
Origin:	Human
Source:	Wheat germ
Protein Type:	Recombinant
Purification tag / Conjugate:	This ZNF326 protein is labelled with GST tag.
Application:	ELISA, Western Blotting (WB), Antibody Array (AA), Affinity Purification (AP)

Product Details

Purpose:	ZNF326 (Human) Recombinant Protein (P01)
Sequence:	MDFEDDYTHS ACRNTYQGFN GMDRDYGPS YGGMDRDYGH GSYGGQRSMD SYLNQSYGMD NHSGGGGGSR FGPYESYDSR SSLGGRDLYR SGYGFNEPEQ SRFGGSYGGR FESSYRNSLD SFGGRNQGG SWEAPYSRSK LRPGFMEDRG RENYSSYSSF SSPHMKPAPV GSRGRGTPAY PESTFGSRNY DAFGGPSTGR GRGRGHMGDF GSIHRPGIVV DYQNKSTNVT VAAARGIKRK MMQPFNKPSG TFIKKPKLAK PMEKISLSKS PTKTDPKNEE EEKRRIEARR EKQRRRREKN SEKYGDGYRM AFTCSFCKFR TFEEDIELH LESSSHQETL DHIQKQTKFD KVVMEFLHEC MVNKFKKTSI RKQQTNNQTE VVKIIEKDVM EGVTVDDHMM KVETVHCSAC SVYIPALHSS VQQLKSPDH IKGKQAYKEQ IKRESVL TAT SILNNPIVKA RYERFVKGEN PFEIQDHSQD QQIEGDEEDE EKIDIEPIEEE EDEDEEEAE EVGEVEVEE VEEVREGGIE GEGNIQGVGE GGEVGVVGEV EGVGEVEEVE ELEETAKEE PADFPVEQPE EN
Characteristics:	Human ZNF326 full-length ORF (NP_892021.1, 1 a.a. - 582 a.a.) recombinant protein with GST-

Product Details

tag at N-terminal.

Purification: in vitro wheat germ expression system

Target Details

Target: ZNF326

Alternative Name: ZNF326 ([ZNF326 Products](#))

Background: Full Gene Name: zinc finger protein 326
Synonyms: FLJ20403,MGC61591,ZAN75,Zfp326,dJ871E2.1

Gene ID: 284695

NCBI Accession: [NM_182976](#)

Application Details

Application Notes: Optimal working dilution should be determined by the investigator.

Comment: Preparation method: in vitro, wheat germ expression system
Product Quality tested by: 12.5% SDS-PAGE Stained with Coomassie Blue.

Restrictions: For Research Use only

Handling

Buffer: 50 mM Tris-HCl, 10 mM reduced Glutathione, pH =8.0 in the elution buffer.

Handling Advice: Aliquot to avoid repeated freezing and thawing.

Storage: -80 °C

Storage Comment: Best use within three months from the date of receipt of this protein.

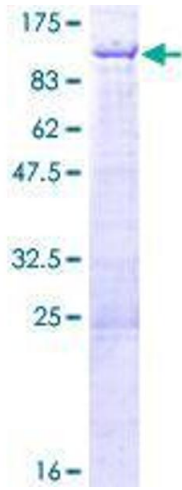


Image 1.