

Datasheet for ABIN1326214
ZNF461 Protein (AA 1-563) (GST tag)



[Go to Product page](#)

1 Image

Overview

Quantity:	10 µg
Target:	ZNF461
Protein Characteristics:	AA 1-563
Origin:	Human
Source:	Wheat germ
Protein Type:	Recombinant
Purification tag / Conjugate:	This ZNF461 protein is labelled with GST tag.
Application:	ELISA, Western Blotting (WB), Antibody Array (AA), Affinity Purification (AP)

Product Details

Purpose:	ZNF461 (Human) Recombinant Protein (P01)
Sequence:	MAHELVMFRD VAIDVSQEEW ECLNPAQRNL YKEVMLENYS NLVSLGLSVS KPAVISSLEQ GKEPWMVVRE ETGRWCPGTW KTWGFHNNFL DNNEATDINA DLASRDEPQK LSPKRDIYET ELSQWVNMEE FKSHSPERSI FSAIWEGNCH FEQHQQQEEG YFRQLMINHE NMPIFSQHTL LTQEFYDREK ISECKKCRKI FSYHLFFSHH KRTHSKELSE CKECTEIVNT PCLFKQQTIQ NGDKCNECKE CWKAFVHCSQ LKHLRIHNGE KRYECNECGK AFNYGSELTL HQRIHTGEKP YECKEKGKAF RQRSQLTQH Q RLHTGEKPYE CKQCGKAFIR GFQLTEHLRL HTGEKPYECK ECGKTRHRS HLTIHQRIHT GEKPYECREC GKAFSYHSSF SHHQIHS GKPYECHECGK AFCDGLQLTL HQRIHTGEKP YECKEKGKTF RQCSHLKRHQ RIHTGEKPHE CMICGKAFRL HSHLIHQRI HTGEKPYECK ECGKAFSYHS SFSHHQRIHS GKPPYQCGKA FNHRLQLNLH QTLHTGEKPV RFPLPPHPS LAS
Characteristics:	Human ZNF461 full-length ORF (NP_694989.2, 1 a.a. - 563 a.a.) recombinant protein with GST-

Product Details

tag at N-terminal.

Purification: in vitro wheat germ expression system

Target Details

Target: ZNF461

Alternative Name: ZNF461 ([ZNF461 Products](#))

Background: Full Gene Name: zinc finger protein 461
Synonyms: GIOT-1,GIOT1,MGC33911

Gene ID: 92283

NCBI Accession: [NM_153257](#)

Application Details

Application Notes: Optimal working dilution should be determined by the investigator.

Comment: Preparation method: in vitro, wheat germ expression system
Product Quality tested by: 12.5% SDS-PAGE Stained with Coomassie Blue.

Restrictions: For Research Use only

Handling

Buffer: 50 mM Tris-HCl, 10 mM reduced Glutathione, pH =8.0 in the elution buffer.

Handling Advice: Aliquot to avoid repeated freezing and thawing.

Storage: -80 °C

Storage Comment: Best use within three months from the date of receipt of this protein.

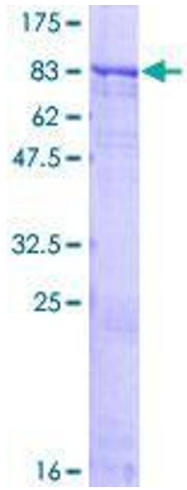


Image 1.