



[Go to Product page](#)

Datasheet for ABIN1326341

ZNF621 Protein (AA 1-439) (GST tag)

1 Image

Overview

| | |
|-------------------------------|---|
| Quantity: | 25 µg |
| Target: | ZNF621 |
| Protein Characteristics: | AA 1-439 |
| Origin: | Human |
| Source: | Wheat germ |
| Protein Type: | Recombinant |
| Purification tag / Conjugate: | This ZNF621 protein is labelled with GST tag. |
| Application: | ELISA, Western Blotting (WB), Antibody Array (AA), Affinity Purification (AP) |

Product Details

| | |
|------------------|--|
| Purpose: | ZNF621 (Human) Recombinant Protein (P01) |
| Sequence: | MLQTTWPQES VTFEDVAVYF TQNQWASLDP AQRALYGEVM LENYANVASL VAFPFKPKPAL ISHLERGEAP WGPDPWDTEI LRGISQGGES WIKNEGLVIK QEASEETELH RMPVGGLLRN VSQHFDKFRK ALKQTFNLNP NLILRGGMKF YECKECKGKIF RYNSKLIRHQ MSHTGEKPKF CKECKKAFKS SYDCIVHEKN HIGEGPYECK ECGKGLSSNT ALTQHQRHHT GEKPYECKEC GKAFFRRAAY LQHQLHTGE KLYKCKECWK AFGCRSLFIV HQRHHTGEKP YQCKECKKAF TQKIASIQHQ RVHTGEKPYE CKVCGKAFKW YGSFVQHQL HPVEKKPKVKV LGPSLVSPQC SSPAIPPVLL QGSCSASAVA VPSLTFPHAV LIPTSGNFFM LLPTSGIPSS SAQIVRVFQG LTPTVKPSPV ILTPSSHSS |
| Characteristics: | Human ZNF621 full-length ORF (NP_940886.1, 1 a.a. - 439 a.a.) recombinant protein with GST-tag at N-terminal. |

Product Details

Purification: in vitro wheat germ expression system

Target Details

Target: ZNF621

Alternative Name: ZNF621 ([ZNF621 Products](#))

Background: Full Gene Name: zinc finger protein 621
Synonyms: DKFZp686B111107,FLJ23786,FLJ45246,MGC126668

Gene ID: 285268

NCBI Accession: [NM_198484](#)

Application Details

Application Notes: Optimal working dilution should be determined by the investigator.

Comment: Preparation method: in vitro, wheat germ expression system
Product Quality tested by: 12.5% SDS-PAGE Stained with Coomassie Blue.

Restrictions: For Research Use only

Handling

Buffer: 50 mM Tris-HCl, 10 mM reduced Glutathione, pH =8.0 in the elution buffer.

Handling Advice: Aliquot to avoid repeated freezing and thawing.

Storage: -80 °C

Storage Comment: Best use within three months from the date of receipt of this protein.

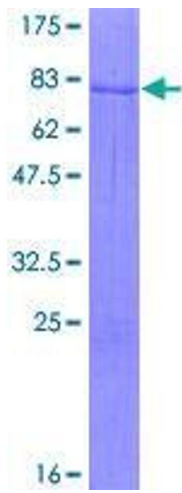


Image 1.