



[Go to Product page](#)

Datasheet for ABIN1326407

## ZNF738 Protein (AA 1-137) (GST tag)

### 1 Image

#### Overview

Quantity:	10 µg
Target:	ZNF738
Protein Characteristics:	AA 1-137
Origin:	Human
Source:	Wheat germ
Protein Type:	Recombinant
Purification tag / Conjugate:	This ZNF738 protein is labelled with GST tag.
Application:	ELISA, Western Blotting (WB), Antibody Array (AA), Affinity Purification (AP)

#### Product Details

Purpose:	LOC148203 (Human) Recombinant Protein (P01)
Sequence:	MDDLRYGVYP VKGASGYPGA ERNLLEYSYF EKGPLTRDV VIEFSQEEWQ CLDTAQQDLY RKVMLENFRN LVFLGIDVSK PDLITCLEQG KDPWNMKRHS MVATPPESGV LKFPTIILL SRCFFQSVNI CFIYLEP
Characteristics:	Human LOC148203 full-length ORF ( AAH34499.1, 1 a.a. - 137 a.a.) recombinant protein with GST-tag at N-terminal.
Purification:	in vitro wheat germ expression system

#### Target Details

Target:	ZNF738
Alternative Name:	ZNF738 ( <a href="#">ZNF738 Products</a> )

## Target Details

Background: Full Gene Name: zinc finger protein 738  
Synonyms:

Gene ID: 148203

## Application Details

Application Notes: Optimal working dilution should be determined by the investigator.

Comment: Preparation method: in vitro, wheat germ expression system  
Product Quality tested by: 12.5% SDS-PAGE Stained with Coomassie Blue.

Restrictions: For Research Use only

## Handling

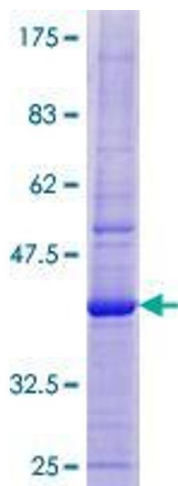
Buffer: 50 mM Tris-HCl, 10 mM reduced Glutathione, pH =8.0 in the elution buffer.

Handling Advice: Aliquot to avoid repeated freezing and thawing.

Storage: -80 °C

Storage Comment: Best use within three months from the date of receipt of this protein.

## Images



**Image 1.**