

Datasheet for ABIN1326458
ZNF83 Protein (AA 1-516) (GST tag)



[Go to Product page](#)

1 Image

Overview

Quantity:	10 µg
Target:	ZNF83
Protein Characteristics:	AA 1-516
Origin:	Human
Source:	Wheat germ
Protein Type:	Recombinant
Purification tag / Conjugate:	This ZNF83 protein is labelled with GST tag.
Application:	ELISA, Western Blotting (WB), Antibody Array (AA), Affinity Purification (AP)

Product Details

Purpose:	ZNF83 (Human) Recombinant Protein (P01)
Sequence:	MHGRKDDAQK QPVKNQLGLN PQSHLPELQL FQAEGKIYKY DHMEKSVNSS SLVSPQQRIS STVKTHISHT YECNFVDSL F TQKEKANIGT EHYKCNERGK AFHQGLHFTI HQIIHTKETQ FKCDICGKIF NKKSNLASHQ RIHTGEKPYK CNECGKVFHN MSHLAQHRR I HTGEKPYKCN ECGKVFNQIS HLAQHQR I HT GEKPYKCN EC GKV F HQ I SHL AQHRTIHTGE KPYECNKCGK VFSRNSYL VQ HLI I HTGEK P YRCNVCGKVF HHISHLAQH Q RIHTGEKPYK CNECGKVF SH KSSLVNHWR I HTGEKPYKCN ECGKVF SHKS SLVNHWR I HT GEKPYKCN EC GKVFSRNSYL AQHLIIHAGE KPYKDECDK AFSQNSHLVQ HRR I HTGEK P YK CDECGKVF SQNSYLAYHW RIHTGEKAYK CNECGKVFGL NSSLAHRKI HTGEKPFKCN ECGKAFSMRS SLTNHHAIHT GEKHFKCNEC GKLFRDNSYL VRHQRFHAGK KSNTCN
Characteristics:	Human ZNF83 full-length ORF (AAH50407.1, 1 a.a. - 516 a.a.) recombinant protein with GST-tag at N-terminal.

Product Details

Purification: in vitro wheat germ expression system

Target Details

Target: ZNF83

Alternative Name: ZNF83 ([ZNF83 Products](#))

Background: Full Gene Name: zinc finger protein 83
Synonyms: FLJ11015,FLJ14876,FLJ30097,FLJ90585,HPF1,MGC33853,ZNF816B

Gene ID: 55769

Application Details

Application Notes: Optimal working dilution should be determined by the investigator.

Comment: Preparation method: in vitro, wheat germ expression system
Product Quality tested by: 12.5% SDS-PAGE Stained with Coomassie Blue.

Restrictions: For Research Use only

Handling

Buffer: 50 mM Tris-HCl, 10 mM reduced Glutathione, pH =8.0 in the elution buffer.

Handling Advice: Aliquot to avoid repeated freezing and thawing.

Storage: -80 °C

Storage Comment: Best use within three months from the date of receipt of this protein.

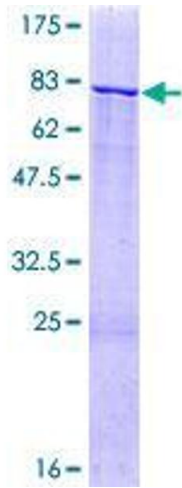


Image 1.