



[Go to Product page](#)

Datasheet for ABIN1326520

ZRSR2 Protein (AA 294-393) (GST tag)

1 Image

Overview

Quantity:	10 µg
Target:	ZRSR2
Protein Characteristics:	AA 294-393
Origin:	Human
Source:	Wheat germ
Protein Type:	Recombinant
Purification tag / Conjugate:	This ZRSR2 protein is labelled with GST tag.
Application:	ELISA, Western Blotting (WB), Antibody Array (AA), Affinity Purification (AP)

Product Details

Purpose:	U2AF1L2 (Human) Recombinant Protein (Q01)
Sequence:	GRQLQCEFCP VTRWKMAICG LFEIQQCPRG KHCNFLHVFR NPNNEFWAN RDIYLSPDRT GSSFGKNSER RERMGHDDY YSRLRGRNP SPDHSYKRNG
Characteristics:	Human U2AF1L2 partial ORF (NP_005080.1, 294 a.a. - 393 a.a.) recombinant protein with GST-tag at N-terminal.
Purification:	in vitro wheat germ expression system

Target Details

Target:	ZRSR2
Alternative Name:	ZRSR2 (ZRSR2 Products)

Target Details

Background:	Full Gene Name: zinc finger (CCCH type), RNA-binding motif and serine/arginine rich 2 Synonyms: MGC142014,MGC142040,U2AF1-RS2,U2AF1L2,U2AF1RS2,URP
Gene ID:	8233
NCBI Accession:	NM_005089
Pathways:	Ribonucleoprotein Complex Subunit Organization

Application Details

Application Notes:	Optimal working dilution should be determined by the investigator.
Comment:	Preparation method: in vitro, wheat germ expression system Product Quality tested by: 12.5% SDS-PAGE Stained with Coomassie Blue.
Restrictions:	For Research Use only

Handling

Buffer:	50 mM Tris-HCl, 10 mM reduced Glutathione, pH =8.0 in the elution buffer.
Handling Advice:	Aliquot to avoid repeated freezing and thawing.
Storage:	-80 °C
Storage Comment:	Best use within three months from the date of receipt of this protein.

Images

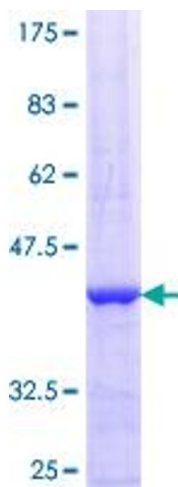


Image 1.