

Datasheet for ABIN1326530
ZSCAN16 Protein (AA 132-230) (GST tag)



[Go to Product page](#)

1 Image

Overview

Quantity:	10 µg
Target:	ZSCAN16
Protein Characteristics:	AA 132-230
Origin:	Human
Source:	Wheat germ
Protein Type:	Recombinant
Purification tag / Conjugate:	This ZSCAN16 protein is labelled with GST tag.
Application:	ELISA, Western Blotting (WB), Antibody Array (AA), Affinity Purification (AP)

Product Details

Purpose:	ZNF435 (Human) Recombinant Protein (Q01)
Sequence:	GNSERRDILM DKLAPLGRPY ESLTVQLHPK KTQLEQEAGK PQRNGDKTRT KNEELFQKED MPKDKEFLGE INDRLNKDTP QHPKSKDIIIE NEGRSEWQQ
Characteristics:	Human ZNF435 partial ORF (NP_079507.1, 132 a.a. - 230 a.a.) recombinant protein with GST-tag at N-terminal.
Purification:	in vitro wheat germ expression system

Target Details

Target:	ZSCAN16
Alternative Name:	ZSCAN16 (ZSCAN16 Products)

Target Details

Background:	Full Gene Name: zinc finger and SCAN domain containing 16 Synonyms: FLJ22191,ZNF392,ZNF435,dJ265C24.3
Gene ID:	80345
NCBI Accession:	NM_025231

Application Details

Application Notes:	Optimal working dilution should be determined by the investigator.
Comment:	Preparation method: in vitro, wheat germ expression system Product Quality tested by: 12.5% SDS-PAGE Stained with Coomassie Blue.
Restrictions:	For Research Use only

Handling

Buffer:	50 mM Tris-HCl, 10 mM reduced Glutathione, pH =8.0 in the elution buffer.
Handling Advice:	Aliquot to avoid repeated freezing and thawing.
Storage:	-80 °C
Storage Comment:	Best use within three months from the date of receipt of this protein.

Images

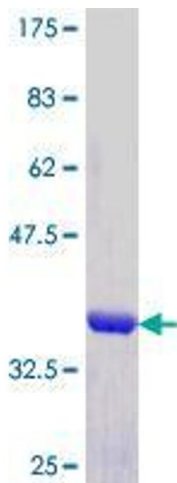


Image 1.