

Datasheet for ABIN1326540  
**ZSCAN21 Protein (GST tag)**



[Go to Product page](#)

1 Image

## Overview

Quantity:	10 µg
Target:	ZSCAN21 (Zscan21)
Origin:	Human
Source:	Wheat germ
Protein Type:	Recombinant
Purification tag / Conjugate:	This ZSCAN21 protein is labelled with GST tag.
Application:	ELISA, Western Blotting (WB), Antibody Array (AA), Affinity Purification (AP)

## Product Details

Purpose:	ZSCAN21 (Human) Recombinant Protein (P01)
Sequence:	MMTKVLGMAP VLGPRPPQEQ VGPLMVKVEE KEEKGKYLPS LEMFRQRFRQ FGYHDTGPR EALSQRLVLC CEWLRPEIHT KEQILELLVL EQFLTILPQE LQAWVQEHCPE SAEEAVTLL EDLERELDEP GHQVSTPPNE QKPVWEKISS SGTAKESPSS MQQPLETSH KYESWGPLYI QESGEEQEFA QDPRKVRDCR LSTQHEESAD EQKGSEAEGL KGDIIISVIA NKPEASLERQ CVNLENEKGT KPPLQEAGSK KGRESVPTKP TPGERRYICA ECGKAFSNSS NLTKHRRHT GEKPYVCTKC GKAFSHSSNL TLHYRTHLVD RPYDCKCGKA FGQSSDLLKH QRMHTEEAPY QCKDCGKAFS GKGSLIRHYR IHTGEKPYQC NECGKSFSQH AGLSSHQLRH TGEKPYKCKE CGKAFNHSSN FNKHHRIHTG EKPYWCHHCG KTFCSKSNLS KHQRVHTGEG EAP
Characteristics:	Human ZSCAN21 full-length ORF ( AAH47309.1, 1 a.a. - 473 a.a.) recombinant protein with GST-tag at N-terminal.
Purification:	in vitro wheat germ expression system

## Target Details

Target:	ZSCAN21 (Zscan21)
Alternative Name:	ZSCAN21 ( <a href="#">Zscan21 Products</a> )
Background:	Gene: zinc finger and SCAN domain containing 21 Synonyms: DKFZp434L134, DKFZp686H10254, NY-REN-21, ZNF38, Zipro1
Gene ID:	7589

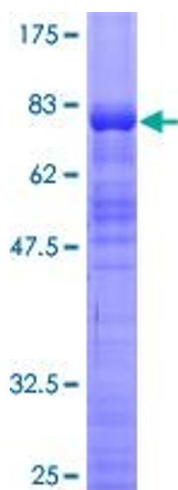
## Application Details

Application Notes:	Optimal working dilution should be determined by the investigator.
Restrictions:	For Research Use only

## Handling

Buffer:	50 mM Tris-HCl, 10 mM reduced Glutathione, pH =8.0 in the elution buffer.
Handling Advice:	Aliquot to avoid repeated freezing and thawing.
Storage:	-80 °C
Storage Comment:	Best use within three months from the date of receipt of this protein.

## Images



**Image 1.**