



[Go to Product page](#)

Datasheet for ABIN1326542

ZSCAN21 Protein (AA 136-224) (GST tag)

1 Image

Overview

Quantity:	10 µg
Target:	ZSCAN21 (Zscan21)
Protein Characteristics:	AA 136-224
Origin:	Human
Source:	Wheat germ
Protein Type:	Recombinant
Purification tag / Conjugate:	This ZSCAN21 protein is labelled with GST tag.
Application:	ELISA, Western Blotting (WB), Antibody Array (AA), Affinity Purification (AP)

Product Details

Purpose:	ZSCAN21 (Human) Recombinant Protein (Q01)
Sequence:	TPPNEQKPVW EKISSSGTAK ESPSSMQPQP LETSHKYESW GPLYIQESGE EQEFAQDPRK VRDCRLSTQH EESADEQKGS EA EGLK GDI
Characteristics:	Human ZSCAN21 partial ORF (NP_666019, 136 a.a. - 224 a.a.) recombinant protein with GST-tag at N-terminal.
Purification:	in vitro wheat germ expression system

Target Details

Target:	ZSCAN21 (Zscan21)
Alternative Name:	ZSCAN21 (Zscan21 Products)

Target Details

Background:	Full Gene Name: zinc finger and SCAN domain containing 21 Synonyms: DKFZp434L134,DKFZp686H10254,NY-REN-21,ZNF38,Zipro1
Gene ID:	7589
NCBI Accession:	NM_145914

Application Details

Application Notes:	Optimal working dilution should be determined by the investigator.
Comment:	Preparation method: in vitro, wheat germ expression system Product Quality tested by: 12.5% SDS-PAGE Stained with Coomassie Blue
Restrictions:	For Research Use only

Handling

Buffer:	50 mM Tris-HCl, 10 mM reduced Glutathione, pH =8.0 in the elution buffer.
Handling Advice:	Aliquot to avoid repeated freezing and thawing.
Storage:	-80 °C
Storage Comment:	Best use within three months from the date of receipt of this protein.

Images

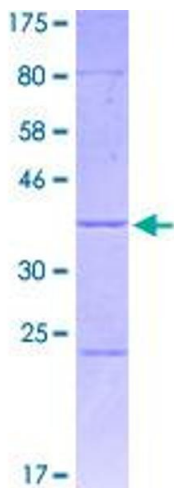


Image 1.