



[Go to Product page](#)

Datasheet for ABIN1326591

## Phospholipase B Protein (PLB) (AA 1-488) (GST tag)

### 1 Image

#### Overview

Quantity:	10 µg
Target:	Phospholipase B (PLB)
Protein Characteristics:	AA 1-488
Origin:	Human
Source:	Wheat germ
Protein Type:	Recombinant
Purification tag / Conjugate:	This Phospholipase B protein is labelled with GST tag.
Application:	Western Blotting (WB), ELISA, Affinity Purification (AP), Antibody Array (AA)

#### Product Details

Purpose:	PLB1 (Human) Recombinant Protein (P01)
Sequence:	MEPAGEKDEP LSVKHGRPMK CPSQESPYLF SYRNSNYLTR LQKPQDKLEV REGAEIRCPD KDPSTVPTS VHRLKPADIN VIGALGDSL T AGNGAGSTPG NVLDVLTQYR GLSWSVGGDE NIGTVTTLAN ILREFNPSLK GFSVGTGKET SPNAFLNQAV AGGRAEDLPV QARRLVDMK NDTRIHQED WKIITLFIGG NDLCDFCNDL VHYSQNF TD NIGKALDILH AEPRAFVNL VTVLEIVNLR ELYQEKKVYC PRMILRSLCP CVLKFDDNST ELATLIEFNK KFQEKTHQLI ESGRYDTRED FTVVVQPFFE NVDMPKTSEG LPDNSFFAPD CFHFSSKSHS RAASALWNNM LEPVGQKTTR HKFENKINIT CPNQVQPFLR TYKNMQGHG TWLPCRDRAP SALHPTSVHA LRPADIQVVA ALGDSL T AGN GIGSKPDDL P DVTTQYRGLS YRESKPGFLS DSWVSKSNRK CTRKAPNP
Characteristics:	Human PLB1 full-length ORF ( AAH65041.1, 1 a.a. - 488 a.a.) recombinant protein with GST-tag at N-terminal.

## Product Details

---

Purification: in vitro wheat germ expression system

## Target Details

---

Target: Phospholipase B (PLB)

Alternative Name: PLB1 (PLB Products)

Background: Full Gene Name:  
Synonyms:

Gene ID: 388937

## Application Details

---

Application Notes: Optimal working dilution should be determined by the investigator.

Comment: Preparation method: in vitro, wheat germ expression system  
Product Quality tested by: 12.5% SDS-PAGE Stained with Coomassie Blue.

Restrictions: For Research Use only

## Handling

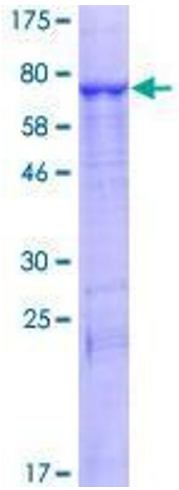
---

Buffer: 50 mM Tris-HCl, 10 mM reduced Glutathione, pH =8.0 in the elution buffer.

Handling Advice: Aliquot to avoid repeated freezing and thawing.

Storage: -80 °C

Storage Comment: Best use within three months from the date of receipt of this protein.



**Image 1.**