



[Go to Product page](#)

Datasheet for ABIN1326915
anti-LRRN1 antibody (AA 1-716)

7 Images

Overview

Quantity:	100 µg
Target:	LRRN1
Binding Specificity:	AA 1-716
Reactivity:	Human
Host:	Mouse
Clonality:	Monoclonal
Conjugate:	This LRRN1 antibody is un-conjugated
Application:	ELISA, Western Blotting (WB)

Product Details

Purpose:	Mouse monoclonal antibody raised against a full-length recombinant LRRN1.
Immunogen:	LRRN1 (CAL37408.1, 1 a.a. ~ 716 a.a) full-length recombinant protein with GST tag. MW of the GST tag alone is 26 KDa.
Sequence:	MARMSFVIAA CQLVLGLLMT SLTESSIQNS ECPQLCVCEI RPWFTPQSTY REATTVDCND LRLTRIPSNL SSDTQVLLLQ SNNIAKTVDE LQQLFNLTTEL DFSQNNFTNI KEVGLANLTQ LTTLHLEENQ ITEM TDYCLQ DLSNLQELYI NHNQISTISA HAFAGLKNLL RLHLNSNKLK VIDSRWFDST PNLEILMIGE NPVIGILDMN FKPLANLRSL VLAGMYLTDI PGNALVGLDS LESLSFYDNK LVKVPQLALQ KVPSLKFLDL NKNPIHKIQE GDFKNMLRLK ELGINNMGEL VSVDRYALDN LPELTKLEAT NNPKLSYIHR LAFRSVPALE SLMLNNNALN AIYQKTVESL PNLREISIHS NPLRCDCVIH WINSNKTNIR FMEPLSMFCA MPPEYKGHQV KEVLIQDSSE QCLPMISHDS FPNRLNVDIG TTVFLDCRAM AEPEPEIYWV TPIGNKITVE TLDKYLKSS EGTLEISNIQ IEDSGRYTCV AQNVQGADTR VATIKVNGTL LDGTQVLKIY VKQTESHIL

Product Details

VSWKVNNSVM TSNLKWSSAT MKIDNPHTY TARVPVDVHE YNLTHLQPST DYEVCCLTVSN
IHQQTQKSCV NVTTKNAFA VDISDQETST ALAAVMGSMF AVISLASIAV YFAKRFKRKN
YHHSLLKQYMQ KTSSIPLNEL YPPLINLWEG DSEKDKDGS A DTKPTQVDTS RSYMMW

Clone:	3D11
Isotype:	IgG2b
Cross-Reactivity:	Human, Mouse, Rat
Characteristics:	Antibody Reactive Against Recombinant Protein.

Target Details

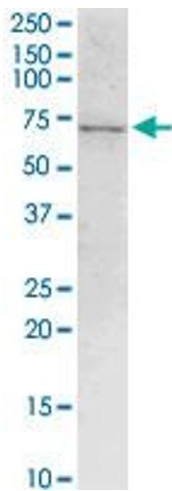
Target:	LRRN1
Alternative Name:	LRRN1 (LRRN1 Products)
Background:	Full Gene Name: leucine rich repeat neuronal 1 Synonyms: FIGLER3,KIAA1497,NLRR-1
Gene ID:	57633

Application Details

Application Notes:	Optimal working dilution should be determined by the investigator.
Restrictions:	For Research Use only

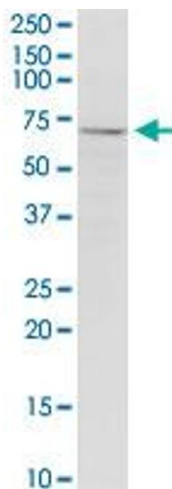
Handling

Buffer:	In 1x PBS, pH 7.4
Handling Advice:	Aliquot to avoid repeated freezing and thawing.
Storage:	-20 °C
Storage Comment:	Store at -20°C or lower. Aliquot to avoid repeated freezing and thawing.



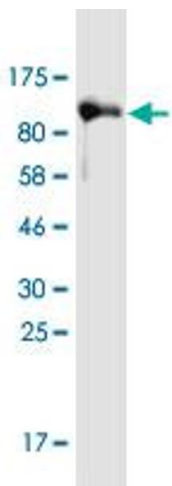
Western Blotting

Image 1. LRRN1 monoclonal antibody (M05), clone 3D11.
Western Blot analysis of LRRN1 expression in Raw 264.7.



Western Blotting

Image 2. LRRN1 monoclonal antibody (M05), clone 3D11.
Western Blot analysis of LRRN1 expression in PC-12.



Western Blotting

Image 3. Western Blot detection against Immunogen
(105.27 kDa).

Please check the [product details page](#) for more images. Overall 7 images are available for ABIN1326915.