

Datasheet for ABIN1326917
anti-LRRN1 antibody (AA 1-716)



[Go to Product page](#)

2 Images

Overview

Quantity:	100 µg
Target:	LRRN1
Binding Specificity:	AA 1-716
Reactivity:	Human
Host:	Mouse
Clonality:	Monoclonal
Conjugate:	This LRRN1 antibody is un-conjugated
Application:	ELISA, Western Blotting (WB), Immunofluorescence (IF)

Product Details

Purpose:	Mouse monoclonal antibody raised against a full-length recombinant LRRN1.
Immunogen:	LRRN1 (CAL37408.1, 1 a.a. ~ 716 a.a) full-length recombinant protein with GST-pstS1 tag.
Sequence:	MARMSFVIAA CQLVLGLLMT SLTESSIQNS ECPQLCVCEI RPWFTPQSTY REATTVDCND LRLTRIPSNL SSDTQVLLLQ SNNAIKTVDE LQQLFNLTTEL DFSQNNFTNI KEVGLANLTQ LTTLHLEENQ ITEM TDYCLQ DLSNLQELYI NHNQISTISA HAFAGLKNLL RLHLNSNKLK VIDSRWFDST PNLEILMIGE NPVIGILDMN FKPLANLRSL VLAGMYLTDI PGNALVGLDS LESLSFYDNK LVKVPQLALQ KVPSLKFLDL NKNPIHKIQE GDFKNMLRLK ELGINNMGEL VSVDRYALDN LPELTKEAT NNPKLSYIHR LAFRSVPALE SLMLNNNALN AIYQKTVESL PNLREISIH S NPLRCDCVIH WINSNKTNIR FMEPLSMFCA MPPEYKGHQV KEVLIQDSSE QCLPMISHDS FPNRLNVDIG TTVFLDCRAM AEPEPEIYWV TPIGNKITVE T LSDKYKLSS EGTLEISNIQ IEDSGRYTCV AQNVQGADTR VATIKVNGTL LDGTQVLKIY VKQTESHIL VSWKVNNSVM TSNLKWSSAT MKIDNPHITY TARVPVDVHE YNLTHLQPST DYEVCCLTVSN

Product Details

IHQQTQKSCV NVTTKNAAFA VDISDQETST ALAAVMGSMF AVISLASIAV YFAKRFKRKN
YHHSLLKKYMQ KTSSIPLNEL YPPLINLWEG DSEKDKDGS A DTKPTQVDTS RSYMMW

Clone:	3F1
Isotype:	IgG1
Cross-Reactivity:	Human
Characteristics:	Antibody Reactive Against Recombinant Protein.

Target Details

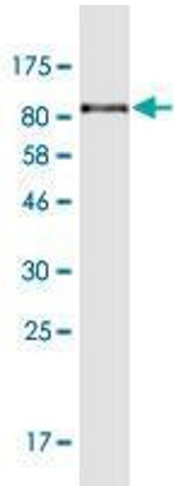
Target:	LRRN1
Alternative Name:	LRRN1 (LRRN1 Products)
Background:	Full Gene Name: leucine rich repeat neuronal 1 Synonyms: FIGLER3,KIAA1497,NLRR-1
Gene ID:	57633

Application Details

Application Notes:	Optimal working dilution should be determined by the investigator.
Restrictions:	For Research Use only

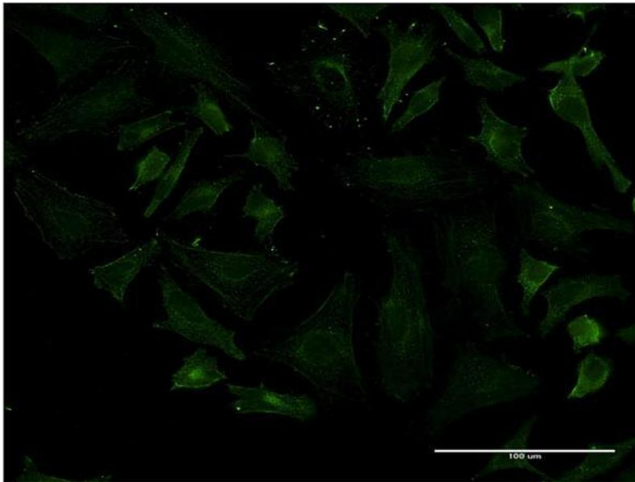
Handling

Buffer:	In 1x PBS, pH 7.4
Handling Advice:	Aliquot to avoid repeated freezing and thawing.
Storage:	-20 °C
Storage Comment:	Store at -20°C or lower. Aliquot to avoid repeated freezing and thawing.



Western Blotting

Image 1. Western Blot detection against Immunogen (106.7 KDa) .



Immunofluorescence

Image 2. Immunofluorescence of monoclonal antibody to LRRN1 on HeLa cell. [antibody concentration 10 ug/ml]