



[Go to Product page](#)

Datasheet for ABIN1326947
anti-CEP55 antibody (AA 1-464)

4 Images

Overview

Quantity:	100 µg
Target:	CEP55
Binding Specificity:	AA 1-464
Reactivity:	Human
Host:	Mouse
Clonality:	Monoclonal
Conjugate:	This CEP55 antibody is un-conjugated
Application:	Western Blotting (WB), ELISA

Product Details

Purpose:	Mouse monoclonal antibody raised against a full-length recombinant CEP55.
Immunogen:	CEP55 (AAH08947, 1 a.a. ~ 464 a.a) full-length recombinant protein with GST tag. MW of the GST tag alone is 26 KDa.
Sequence:	MSSRSTKDLI KSKWGSKPSN SKSETTLEKL KGEIAHLKAS VDEITSGKGK LTKERHRL EKIRVLEAEK EKNAYQLTEK DKEIQRLRDQ LKARYSTTAL LEQLEETTRE GERREQVLKA LSEEKDVLKQ QLSAATSRIA ELESKTNTLR LSQTVAPNCF NSSINNIHEM EIQLKDALEK NQQWLVDYDQQ REVYVKGLLA KIFELEKKTE TAAHSLPQQT KKPESSEGYLQ EEKQKCYNDL LASAKKDLEV ERQTITQLSF ELSEFRRKYE ETQKEVHNLN QLLYSQRRAD VQHLEDDRHK TEKIQLREE NDIARGKLEE EKKRSEELLS QVQFLYTSLL KQEEQTRVA LLEQQMQLACT LDFENEKLDL QHVQHQLLVI LKELRKARNQ ITQLESKQL HEFAITEPLV TFQGETENRE KVAASPKSPT AALNESLVEC PKCNIQYPAT EHRDLLVHVE YCSK

Product Details

Clone:	6A10
Isotype:	IgG1
Cross-Reactivity:	Human, Rat
Characteristics:	Antibody Reactive Against Recombinant Protein.

Target Details

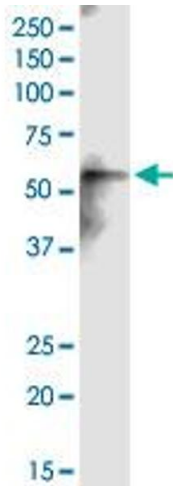
Target:	CEP55
Alternative Name:	CEP55 (CEP55 Products)
Background:	Full Gene Name: centrosomal protein 55 kDa Synonyms: C10orf3,FLJ10540,URCC6
Gene ID:	55165

Application Details

Application Notes:	Optimal working dilution should be determined by the investigator.
Restrictions:	For Research Use only

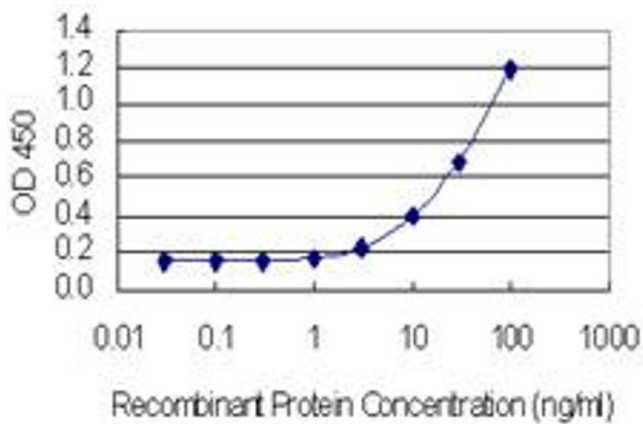
Handling

Buffer:	In 1x PBS, pH 7.4
Handling Advice:	Aliquot to avoid repeated freezing and thawing.
Storage:	-20 °C
Storage Comment:	Store at -20°C or lower. Aliquot to avoid repeated freezing and thawing.



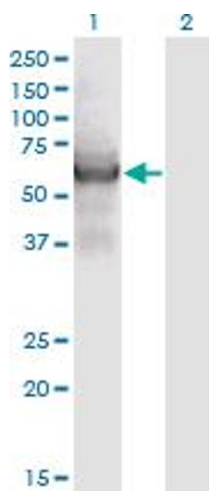
Western Blotting

Image 1. CEP55 monoclonal antibody (M05), clone 6A10. Western Blot analysis of CEP55 expression in HSC-T6.



ELISA

Image 2. Detection limit for recombinant GST tagged CEP55 is 0.3 ng/ml as a capture antibody.



Western Blotting

Image 3. Western Blot analysis of CEP55 expression in transfected 293T cell line by CEP55 monoclonal antibody (M05), clone 6A10.

Lane 1: CEP55 transfected lysate (Predicted MW: 54.1 kDa).
Lane 2: Non-transfected lysate.

Please check the [product details page](#) for more images. Overall 4 images are available for ABIN1326947.