



[Go to Product page](#)

Datasheet for ABIN1326973
anti-GLI1 antibody (AA 401-500)

1 Image

Overview

Quantity:	100 µg
Target:	GLI1
Binding Specificity:	AA 401-500
Reactivity:	Human
Host:	Mouse
Clonality:	Monoclonal
Conjugate:	This GLI1 antibody is un-conjugated
Application:	Western Blotting (WB), ELISA

Product Details

Purpose:	Mouse monoclonal antibody raised against a partial recombinant GLI1.
Immunogen:	GLI1 (AAH13000.1, 401 a.a. ~ 500 a.a) partial recombinant protein with GST-pstS1 tag.
Sequence:	GPLPRAPGIS TVEPKREREG GPIREESRLT VPEGAMKPQP SPGAQSSCSS DHSPAGSAAN TDSGVEMTGN AGGSTEDLSS LDEGPCIAGT GLSTLRRLEN
Clone:	2C9
Isotype:	IgG2b
Cross-Reactivity:	Human
Characteristics:	Antibody Reactive Against Recombinant Protein.

Target Details

Target:	GLI1
Alternative Name:	GLI1 (GLI1 Products)
Background:	Full Gene Name: glioma-associated oncogene homolog 1 (zinc finger protein) Synonyms: GLI
Gene ID:	2735
Pathways:	Hedgehog Signaling , Dopaminergic Neurogenesis

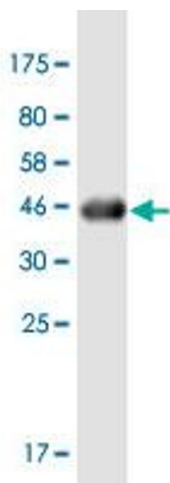
Application Details

Application Notes:	Optimal working dilution should be determined by the investigator.
Restrictions:	For Research Use only

Handling

Buffer:	In 1x PBS, pH 7.4
Handling Advice:	Aliquot to avoid repeated freezing and thawing.
Storage:	-20 °C
Storage Comment:	Store at -20°C or lower. Aliquot to avoid repeated freezing and thawing.

Images



Western Blotting

Image 1. Western Blot detection against Immunogen (39.05 KDa) .