



[Go to Product page](#)

Datasheet for ABIN1326996
anti-E2F3 antibody (AA 1-133)

1 Image

Overview

Quantity:	100 µg
Target:	E2F3
Binding Specificity:	AA 1-133
Reactivity:	Human
Host:	Mouse
Clonality:	Monoclonal
Conjugate:	This E2F3 antibody is un-conjugated
Application:	ELISA

Product Details

Purpose:	Mouse monoclonal antibody raised against a full-length recombinant E2F3.
Immunogen:	E2F3 (AAH16847.1, 1 a.a. ~ 133 a.a) full-length recombinant protein with GST tag. MW of the GST tag alone is 26 KDa.
Sequence:	MQSGGGVKTD DTSTLNSLCG YAWVYVWEEK QRCRLSSFFS SSASIPGLLP SHTLDLVQNV GVVLDEALGW GRERELCVKC LLEMHCGVFS CMGNHLCQAF PHFPYLSHLV SCLCFQLCVI LFASCTKLIF SKV
Clone:	3C11
Isotype:	IgG2b
Cross-Reactivity:	Human
Characteristics:	Antibody Reactive Against Recombinant Protein.

Target Details

Target:	E2F3
Abstract:	E2F3 Products
Background:	Full Gene Name: E2F transcription factor 3 Synonyms: DKFZp686C18211,E2F-3,KIAA0075,MGC104598
Gene ID:	1871

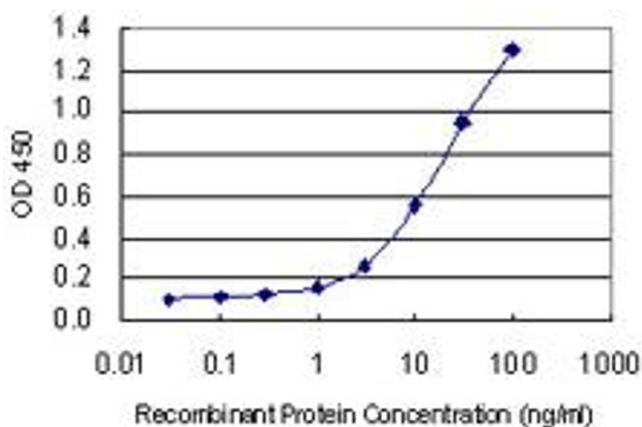
Application Details

Application Notes:	Optimal working dilution should be determined by the investigator.
Restrictions:	For Research Use only

Handling

Buffer:	In 1x PBS, pH 7.4
Handling Advice:	Aliquot to avoid repeated freezing and thawing.
Storage:	-20 °C
Storage Comment:	Store at -20°C or lower. Aliquot to avoid repeated freezing and thawing.

Images



ELISA

Image 1. Detection limit for recombinant GST tagged E2F3 is 0.3 ng/ml as a capture antibody.