



[Go to Product page](#)

Datasheet for ABIN1327026
anti-MCFD2 antibody (AA 1-146)

2 Images

Overview

Quantity:	100 µg
Target:	MCFD2
Binding Specificity:	AA 1-146
Reactivity:	Human
Host:	Mouse
Clonality:	Monoclonal
Conjugate:	This MCFD2 antibody is un-conjugated
Application:	Western Blotting (WB), ELISA, Immunofluorescence (IF)

Product Details

Purpose:	Mouse monoclonal antibody raised against a full-length recombinant MCFD2.
Immunogen:	MCFD2 (AAH40357, 1 a.a. ~ 146 a.a) full-length recombinant protein with GST tag. MW of the GST tag alone is 26 KDa.
Sequence:	MTMRSLLRTP FLCGLLWAFCA PGARAEIPA ASFSQPGSMG LDKNTVHDQE HIMEHLEGVI NKPEAEMSPQ ELQLHYFKMH DYDGNLLLDG LELSTAITHV HKEEGSEQAP LMSEDELINI IDGVLRRDDDK NNDGYIDYAE FAKSLQ
Clone:	X1
Isotype:	IgG1
Cross-Reactivity:	Human
Characteristics:	Antibody Reactive Against Recombinant Protein.

Target Details

Target:	MCFD2
Alternative Name:	MCFD2 (MCFD2 Products)
Background:	Full Gene Name: multiple coagulation factor deficiency 2 Synonyms: DKFZp686G21263,F5F8D,LMAN1IP,SDNSF
Gene ID:	90411

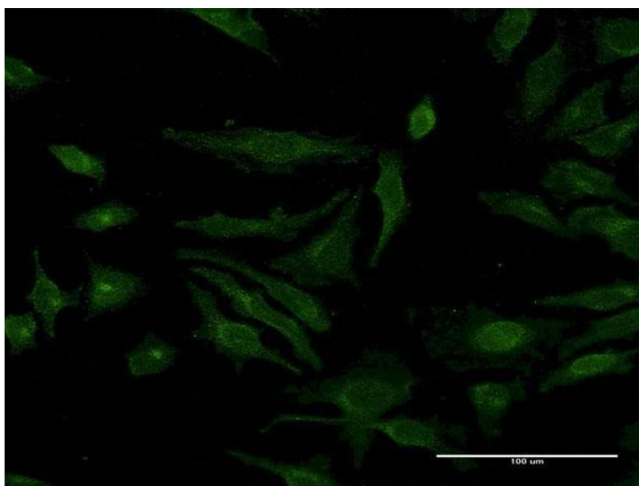
Application Details

Application Notes:	Optimal working dilution should be determined by the investigator.
Restrictions:	For Research Use only

Handling

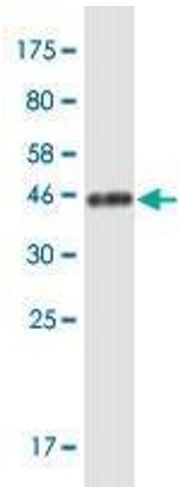
Buffer:	In 1x PBS, pH 7.4
Handling Advice:	Aliquot to avoid repeated freezing and thawing.
Storage:	-20 °C
Storage Comment:	Store at -20°C or lower. Aliquot to avoid repeated freezing and thawing.

Images



Immunofluorescence

Image 1. Immunofluorescence of monoclonal antibody to MCFD2 on HeLa cell. [antibody concentration 10 ug/ml]



Western Blotting

Image 2. Western Blot detection against Immunogen (41.8 kDa).