



## Datasheet for ABIN1327036 anti-ENPP2 antibody (AA 1-863)



[Go to Product page](#)

### 1 Image

#### Overview

Quantity:	100 µg
Target:	ENPP2
Binding Specificity:	AA 1-863
Reactivity:	Human
Host:	Rabbit
Clonality:	Polyclonal
Conjugate:	This ENPP2 antibody is un-conjugated
Application:	Western Blotting (WB)

#### Product Details

Purpose:	Rabbit polyclonal antibody raised against a full-length human ENPP2 protein.
Immunogen:	ENPP2 (ABM85745.1, 1 a.a. ~ 863 a.a) full-length human protein.
Sequence:	MARRSSFQSC QIISLFTFAV GVNICLGFTA HRIKRAEGWE EGPPTVLSDS PWTNISGSCK GRCFELQEAG PPDCRCDNLC KSYTSCCHDF DELCLKTARG WECTKDRCGE VRNEENACHC SEDCLARGDC CTNYQVVCKG ESHWVDDDC EIKAAECPAG FVRPPLIIFS VDGFRASYMK KGSKVMPIE KLRSCGTHSP YMRPVYPTKT FPNLYTLATG LYPESHGIVG NSMYDPVFDA TFHLRGREKF NHRWWGGQPL WITATKQGVK AGTFFWSVVI PHERRILTIL QWLTLPDHER PSVYAFYSEQ PDFSGHKYGP FGPEMTNPLR EIDKIVGQLM DGLKQLKLR CVNVIFVGDH GMEDVTCVRT EFLSNYLTNV DDITLVPRTL GRIRSKFSNN AKYDPKAIIA NLTKKPDQH FKPYLKQHLR KRLHYANNRR IEDIHLLVER RWHVARKPLD VYKPSGKCF FQGDHGFNDK VNSMQTVFVG YGPTFKYKTK VPPFENIELY NVMCDLLGLK PAPNNGTHGS LNHLRTNTF RPTMPEEVTR PNYPGIMYLQ SDFDLGCTCD DKVEPKNKLD ELNRLHTKG STEERHLLYG

## Product Details

---

RPAVLYRTRY DILYHTDFES GYSEIFLMPL WTSYTVSKQA EVSSVPDHLT SCVRPDVRVS  
PSFSQNCLAY KNDKQMSYGF LFPPYLSSSP EAKYDAFLVT NMVPMYPAFK RVWNYFQRVL  
VKKYASERNG VNVISGPIFD YDYDGLHDTE DKIKQYVEGS SIPVPTHYYS IITSCLDFTQ  
PADKCDGPLS VSSFILPHRP DNEESCNSSE DESKWVEELM KMHTARVRDI EHLTSLDFFR  
KTSRSYPEIL TLKTYLHTYE SEI

Cross-Reactivity:	Human
Characteristics:	Antibody reactive against mammalian transfected lysate.

## Target Details

---

Target:	ENPP2
Alternative Name:	ENPP2 ( <a href="#">ENPP2 Products</a> )
Background:	Full Gene Name: ectonucleotide pyrophosphatase/phosphodiesterase 2 Synonyms: ATX,ATX-X,AUTOTAXIN,FLJ26803,LysoPLD,NPP2,PD-IALPHA,PDNP2
Gene ID:	5168

## Application Details

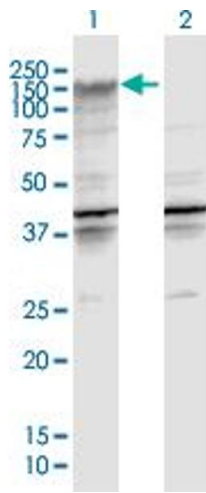
---

Application Notes:	Optimal working dilution should be determined by the investigator.
Restrictions:	For Research Use only

## Handling

---

Buffer:	In 1x PBS, pH 7.4
Handling Advice:	Aliquot to avoid repeated freezing and thawing.
Storage:	-20 °C
Storage Comment:	Store at -20°C or lower. Aliquot to avoid repeated freezing and thawing.



### Western Blotting

**Image 1.** Western Blot analysis of ENPP2 expression in transfected 293T cell line by ENPP2 MaxPab polyclonal antibody.

Lane 1: ENPP2 transfected lysate(94.93 KDa).

Lane 2: Non-transfected lysate.