



[Go to Product page](#)

Datasheet for ABIN1327039  
**anti-ISLR antibody (AA 1-428)**

1 Image

Overview

Quantity:	100 µg
Target:	ISLR
Binding Specificity:	AA 1-428
Reactivity:	Human
Host:	Rabbit
Clonality:	Polyclonal
Conjugate:	This ISLR antibody is un-conjugated
Application:	Western Blotting (WB)

Product Details

Purpose:	Rabbit polyclonal antibody raised against a full-length human ISLR protein.
Immunogen:	ISLR (ABW03309.1, 1 a.a. ~ 428 a.a) full-length human protein.
Sequence:	<p>MQELHLLWWA LLLGLAQACP EPCDCGEKYG FQIADCAYRD LESVPPGFPA NVTTLSLSAN RLPGLPEGAF REVPLLQSLW LAHNEIRTVA AGALASLSHL KSLDLSHNL I SDFAWSDLHN LSALQLLKMD SNELT FIPRD AFRSLRALRS LQLNHNRLHT LAEGTFTPLT ALSHLQINEN PFDCTCGIVW LKTWALTTAV SIPEQDNIAC TSPHV LKGTP LSRLPPLPCS APSVQLSYQP SQDGAELRPG FVLALHCDVD GQPAPQLHWH IQIPSGIVEI TSPNVGTDGR ALPGTPVASS QPRFQAFANG SLLIPDFGKL EEGTYSCLAT NELGSAESSV DVALATPGEG GEDTLGRRFH GKAVEGKGCY TVDNEVQPSG PEDNVVVIYL SRAGNPEAAV AEGVPGQLPP GLLLLGQSLL LFFFLT SF</p>
Cross-Reactivity:	Human

## Product Details

Characteristics: Antibody reactive against mammalian transfected lysate.

## Target Details

Target: ISLR

Alternative Name: ISLR ([ISLR Products](#))

Background: Full Gene Name: immunoglobulin superfamily containing leucine-rich repeat  
Synonyms: HsT17563,MGC102816

Gene ID: 3671

## Application Details

Application Notes: Optimal working dilution should be determined by the investigator.

Restrictions: For Research Use only

## Handling

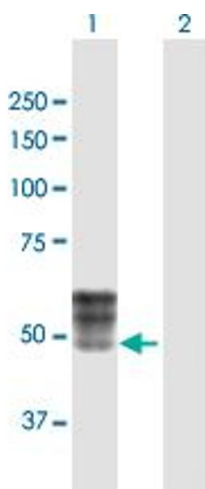
Buffer: In 1x PBS, pH 7.4

Handling Advice: Aliquot to avoid repeated freezing and thawing.

Storage: -20 °C

Storage Comment: Store at -20°C or lower. Aliquot to avoid repeated freezing and thawing.

## Images



### Western Blotting

**Image 1.** Western Blot analysis of ISLR expression in transfected 293T cell line by ISLR MaxPab polyclonal antibody.

Lane 1: ISLR transfected lysate(47.08 KDa).

Lane 2: Non-transfected lysate.