



[Go to Product page](#)

Datasheet for ABIN1327058

anti-AKR1CL1 antibody (AA 1-129)

3 Images

Overview

Quantity:	100 µg
Target:	AKR1CL1
Binding Specificity:	AA 1-129
Reactivity:	Human
Host:	Mouse
Clonality:	Monoclonal
Conjugate:	This AKR1CL1 antibody is un-conjugated
Application:	ELISA, Western Blotting (WB)

Product Details

Purpose:	Mouse monoclonal antibody raised against a full-length recombinant AKR1CL1.
Immunogen:	AKR1CL1 (NP_001007537.1, 1 a.a. ~ 129 a.a) full-length recombinant protein with GST tag. MW of the GST tag alone is 26 KDa.
Sequence:	MMTDLKQSHS VRLNDGPFMP VLGFGTYAPD HTPKSQAAEA TKVAIDVGFR HIDSAYLYQN EEEVQGAIWE KIADGTVKRE EIFYTIKLWA TFFRAELVHP ALERSLKKLG PDYVDLFIH VPFAMKGSS
Clone:	4G8
Isotype:	IgG2a
Cross-Reactivity:	Human
Characteristics:	Antibody Reactive Against Recombinant Protein.

Target Details

Target:	AKR1CL1
Alternative Name:	AKR1CL1 (AKR1CL1 Products)
Background:	Full Gene Name: aldo-keto reductase family 1, member C-like 1 Synonyms: FLJ16347
Gene ID:	340811
NCBI Accession:	NM_001007536

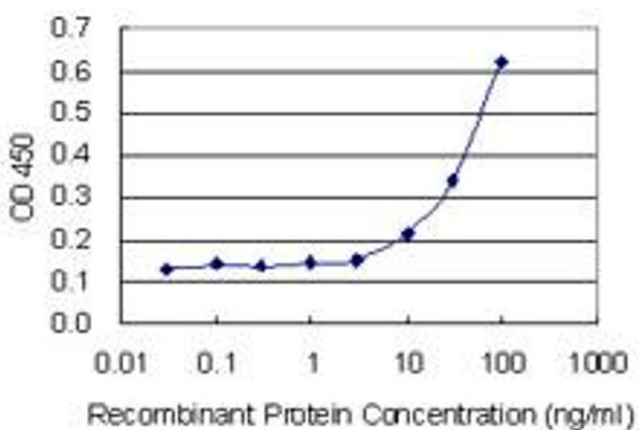
Application Details

Application Notes:	Optimal working dilution should be determined by the investigator.
Restrictions:	For Research Use only

Handling

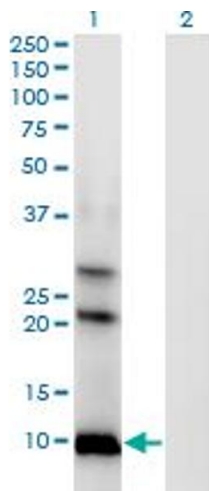
Buffer:	In 1x PBS, pH 7.4
Handling Advice:	Aliquot to avoid repeated freezing and thawing.
Storage:	-20 °C
Storage Comment:	Store at -20°C or lower. Aliquot to avoid repeated freezing and thawing.

Images



ELISA

Image 1. Detection limit for recombinant GST tagged AKR1CL1 is 3 ng/ml as a capture antibody.

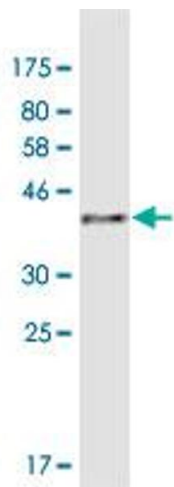


Western Blotting

Image 2. Western Blot analysis of AKR1CL1 expression in transfected 293T cell line by AKR1CL1 monoclonal antibody (M04), clone 4G8.

Lane 1: AKR1CL1 transfected lysate (Predicted MW: 14.6 kDa).

Lane 2: Non-transfected lysate.



Western Blotting

Image 3. Western Blot detection against Immunogen (41 kDa).