



Datasheet for ABIN1327061
anti-LOC541473 antibody (AA 1-131)



[Go to Product page](#)

3 Images

Overview

Quantity:	100 µg
Target:	LOC541473
Binding Specificity:	AA 1-131
Reactivity:	Human
Host:	Rabbit
Clonality:	Polyclonal
Conjugate:	This LOC541473 antibody is un-conjugated
Application:	Immunofluorescence (IF), Western Blotting (WB)

Product Details

Purpose:	Rabbit polyclonal antibody raised against a full-length human LOC541473 protein.
Immunogen:	LOC541473 (NP_001013770.1, 1 a.a. ~ 131 a.a) full-length human protein.
Sequence:	MGGSALNQGVLGDDAPGQS LYERLSQRML DISGDRGVLK DVIREGAGDL VAPDASVLVK YYGYLEHLDR PFDSNYFRKT PRLMKLGEDI TLWGMELGLL SMQRGELARC FVLGKLLDSQ GPSLHLYLRA S
Cross-Reactivity:	Human
Characteristics:	Antibody reactive against mammalian transfected lysate.

Target Details

Target:	LOC541473
---------	-----------

Target Details

Alternative Name:	LOC541473 (LOC541473 Products)
Background:	Full Gene Name: FK506 binding protein 6, 36 kDa pseudogene Synonyms: MGC88170
Gene ID:	541473
NCBI Accession:	NM_001013748

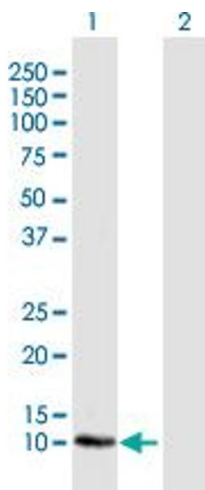
Application Details

Application Notes:	Optimal working dilution should be determined by the investigator.
Restrictions:	For Research Use only

Handling

Buffer:	In 1x PBS, pH 7.4
Handling Advice:	Aliquot to avoid repeated freezing and thawing.
Storage:	-20 °C
Storage Comment:	Store at -20°C or lower. Aliquot to avoid repeated freezing and thawing.

Images

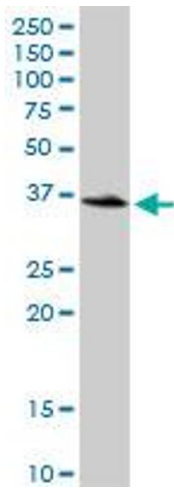


Western Blotting

Image 1. Western Blot analysis of LOC541473 expression in transfected 293T cell line by LOC541473 MaxPab polyclonal antibody.

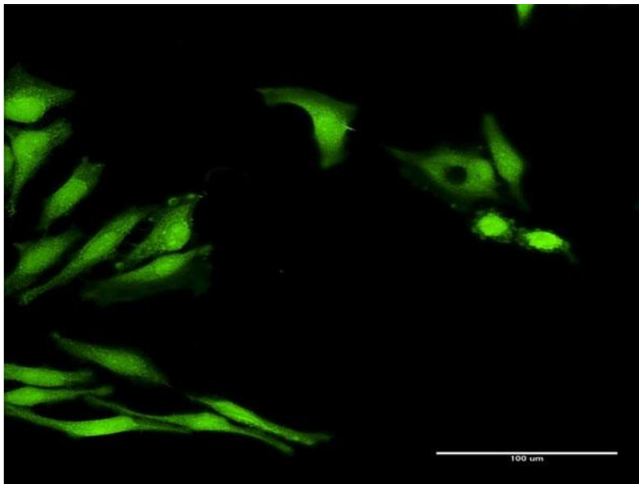
Lane 1: LOC541473 transfected lysate(14.50 KDa).

Lane 2: Non-transfected lysate.



Western Blotting

Image 2. FKBP6 MaxPab rabbit polyclonal antibody. Western Blot analysis of FKBP6 expression in HeLa.



Immunofluorescence

Image 3. Immunofluorescence of purified MaxPab antibody to LOC541473 on HeLa cell. [antibody concentration 30 ug/ml]