

Datasheet for ABIN1327068  
**anti-SLC37A4 antibody (AA 28-76)**[Go to Product page](#)

## 1 Image

## Overview

Quantity:	100 µg
Target:	SLC37A4
Binding Specificity:	AA 28-76
Reactivity:	Human
Host:	Mouse
Clonality:	Monoclonal
Conjugate:	This SLC37A4 antibody is un-conjugated
Application:	Western Blotting (WB), ELISA

## Product Details

Purpose:	Mouse monoclonal antibody raised against a partial recombinant SLC37A4.
Immunogen:	SLC37A4 (NP_001458.1, 28 a.a. ~ 76 a.a) partial recombinant protein with GST tag. MW of the GST tag alone is 26 KDa.
Sequence:	RKTFSFVMPS LVEEIPLDKD DLGFITSSQS AAYAISKFVS GVLSDQMSA
Clone:	7B9
Isotype:	IgG2a
Cross-Reactivity:	Human
Characteristics:	Antibody Reactive Against Recombinant Protein.

## Target Details

Target:	SLC37A4
Alternative Name:	SLC37A4 ( <a href="#">SLC37A4 Products</a> )
Background:	Full Gene Name: solute carrier family 37 (glucose-6-phosphate transporter), member 4 Synonyms: G6PT1,G6PT2,G6PT3,GSD1b,GSD1c,GSD1d,MGC15729,PRO0685,TRG19
Gene ID:	2542
NCBI Accession:	<a href="#">NM_001467</a>
Pathways:	<a href="#">Carbohydrate Homeostasis</a> , <a href="#">Cellular Glucan Metabolic Process</a>

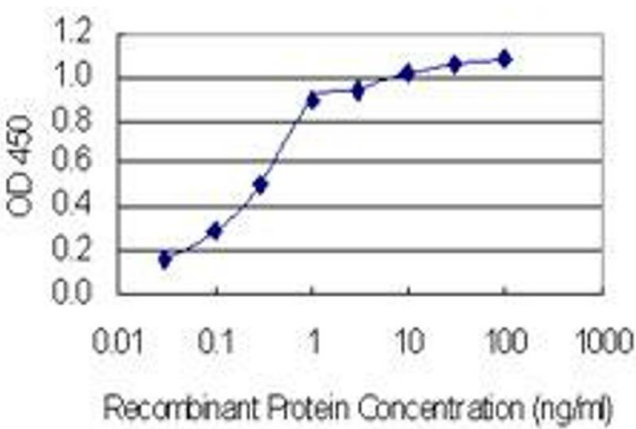
## Application Details

Application Notes:	Optimal working dilution should be determined by the investigator.
Restrictions:	For Research Use only

## Handling

Buffer:	In 1x PBS, pH 7.4
Handling Advice:	Aliquot to avoid repeated freezing and thawing.
Storage:	-20 °C
Storage Comment:	Store at -20°C or lower. Aliquot to avoid repeated freezing and thawing.

## Images



**ELISA**

**Image 1.** Detection limit for recombinant GST tagged SLC37A4 is 0.03 ng/ml as a capture antibody.