



[Go to Product page](#)

Datasheet for ABIN1327103
anti-IGDCC3 antibody (AA 37-136)

2 Images

Overview

Quantity:	100 µg
Target:	IGDCC3 (PUNC)
Binding Specificity:	AA 37-136
Reactivity:	Human
Host:	Mouse
Clonality:	Monoclonal
Conjugate:	This IGDCC3 antibody is un-conjugated
Application:	ELISA, Western Blotting (WB)

Product Details

Purpose:	Mouse monoclonal antibody raised against a partial recombinant IGDCC3.
Immunogen:	IGDCC3 (NP_004875.1, 37 a.a. ~ 136 a.a) partial recombinant protein with GST tag. MW of the GST tag alone is 26 KDa.
Sequence:	GHSAELAFAV EPSDDVAVPG QPIVLDCRVE GTPPVTRITWR KNGVELPEST HSTLLANGSL MIRHFRLEPG GSPSDEGDYE CVAQNRFGVLV VSRKARIQAA
Clone:	6B12
Isotype:	IgG1
Cross-Reactivity:	Human
Characteristics:	Antibody Reactive Against Recombinant Protein.

Target Details

Target:	IGDCC3 (PUNC)
Alternative Name:	IGDCC3 (PUNC Products)
Background:	Full Gene Name: immunoglobulin superfamily, DCC subclass, member 3 Synonyms: HsT18880,PUNC
Gene ID:	9543
NCBI Accession:	NM_004884

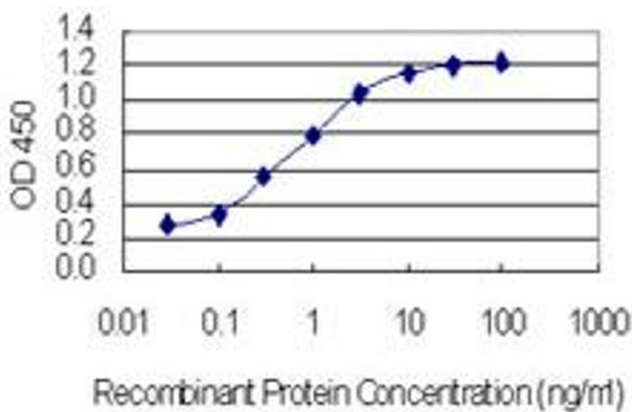
Application Details

Application Notes:	Optimal working dilution should be determined by the investigator.
Restrictions:	For Research Use only

Handling

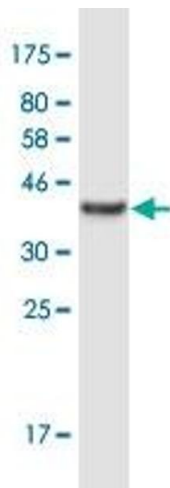
Buffer:	In 1x PBS, pH 7.4
Handling Advice:	Aliquot to avoid repeated freezing and thawing.
Storage:	-20 °C
Storage Comment:	Store at -20°C or lower. Aliquot to avoid repeated freezing and thawing.

Images



ELISA

Image 1. Detection limit for recombinant GST tagged IGDCC3 is 0.03 ng/ml as a capture antibody.



Western Blotting

Image 2. Western Blot detection against Immunogen (36.74 kDa).