



[Go to Product page](#)

Datasheet for ABIN1327127
anti-PGRMC1 antibody (AA 96-195)

3 Images

Overview

Quantity:	100 µg
Target:	PGRMC1
Binding Specificity:	AA 96-195
Reactivity:	Human
Host:	Mouse
Clonality:	Monoclonal
Conjugate:	This PGRMC1 antibody is un-conjugated
Application:	Western Blotting (WB), ELISA

Product Details

Purpose:	Mouse monoclonal antibody raised against a partial recombinant PGRMC1.
Immunogen:	PGRMC1 (NP_006658.1, 96 a.a. ~ 195 a.a) partial recombinant protein with GST tag. MW of the GST tag alone is 26 KDa.
Sequence:	KVFDVTKGRK FYGPEGPYGV FAGRDASRGL ATFCLDKREAL KDEYDDLSDL TAAQQETLSD WESQFTFKYH HVGKLLKEGE EPTVYSDEEE PKDESARKND
Clone:	3F7
Isotype:	IgG2a
Cross-Reactivity:	Human
Characteristics:	Antibody Reactive Against Recombinant Protein.

Target Details

Target:	PGRMC1
Alternative Name:	PGRMC1 (PGRMC1 Products)
Background:	Full Gene Name: progesterone receptor membrane component 1 Synonyms: HPR6.6,MPR
Gene ID:	10857
NCBI Accession:	NM_006667

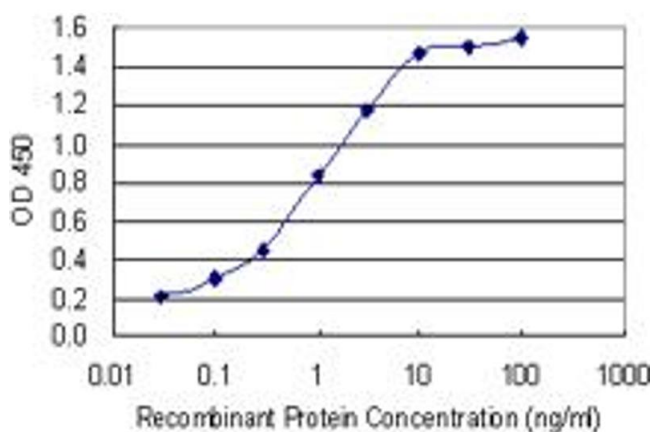
Application Details

Application Notes:	Optimal working dilution should be determined by the investigator.
Restrictions:	For Research Use only

Handling

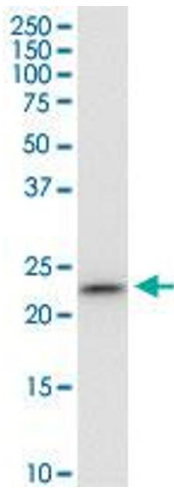
Buffer:	In 1x PBS, pH 7.4
Handling Advice:	Aliquot to avoid repeated freezing and thawing.
Storage:	-20 °C
Storage Comment:	Store at -20°C or lower. Aliquot to avoid repeated freezing and thawing.

Images



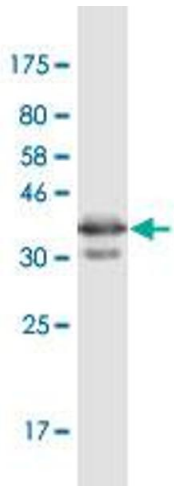
ELISA

Image 1. Detection limit for recombinant GST tagged PGRMC1 is 0.03 ng/ml as a capture antibody.



Western Blotting

Image 2. PGRMC1 monoclonal antibody (M03), clone 3F7. Western Blot analysis of PGRMC1 expression in MCF-7.



Western Blotting

Image 3. Western Blot detection against Immunogen (36.74 kDa).