



[Go to Product page](#)

Datasheet for ABIN1327168
anti-DSCAML1 antibody (AA 1922-2008)

2 Images

Overview

Quantity:	100 µg
Target:	DSCAML1
Binding Specificity:	AA 1922-2008
Reactivity:	Human
Host:	Mouse
Clonality:	Monoclonal
Conjugate:	This DSCAML1 antibody is un-conjugated
Application:	Western Blotting (WB), ELISA

Product Details

Purpose:	Mouse monoclonal antibody raised against a partial recombinant DSCAML1.
Immunogen:	DSCAML1 (NP_065744.2, 1922 a.a. ~ 2008 a.a) partial recombinant protein with GST tag. MW of the GST tag alone is 26 KDa.
Sequence:	SEPGICRFTA SPPKPQDADR GKNVAVPIPH RANKSDYCNL PLYAKSEAFF RKADGREPCP VPPREASIR NLARTYHTQA RHLTLDP
Clone:	6B10
Isotype:	IgG2a
Cross-Reactivity:	Human
Characteristics:	Antibody Reactive Against Recombinant Protein.

Target Details

Target:	DSCAML1
Alternative Name:	DSCAML1 (DSCAML1 Products)
Background:	Full Gene Name: Down syndrome cell adhesion molecule like 1 Synonyms: KIAA1132
Gene ID:	57453
NCBI Accession:	NM_020693

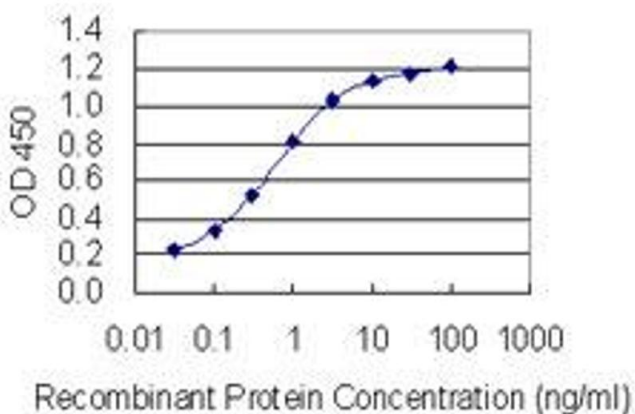
Application Details

Application Notes:	Optimal working dilution should be determined by the investigator.
Restrictions:	For Research Use only

Handling

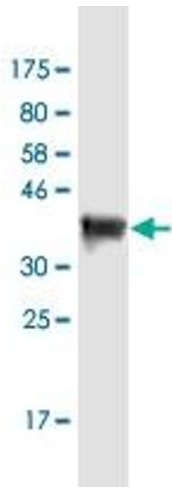
Buffer:	In 1x PBS, pH 7.4
Handling Advice:	Aliquot to avoid repeated freezing and thawing.
Storage:	-20 °C
Storage Comment:	Store at -20°C or lower. Aliquot to avoid repeated freezing and thawing.

Images



ELISA

Image 1. Detection limit for recombinant GST tagged DSCAML1 is 0.03 ng/ml as a capture antibody.



Western Blotting

Image 2. Western Blot detection against Immunogen (35.31 kDa).