



[Go to Product page](#)

Datasheet for ABIN1327183

## anti-PRRX1 antibody (AA 1-90)

3 Images

1 Publication

### Overview

Quantity:	100 µg
Target:	PRRX1
Binding Specificity:	AA 1-90
Reactivity:	Human
Host:	Mouse
Clonality:	Monoclonal
Conjugate:	This PRRX1 antibody is un-conjugated
Application:	Western Blotting (WB), ELISA

### Product Details

Purpose:	Mouse monoclonal antibody raised against a partial recombinant PRRX1.
Immunogen:	PRRX1 (NP_073207, 1 a.a. ~ 90 a.a) partial recombinant protein with GST tag. MW of the GST tag alone is 26 KDa.
Sequence:	MTSSYGHVLE RQPALGGRLD SPGNLDTLQA KKNFSVSHLL DLEEAGDMVA AQADENVGEA GRSLLESPGL TSGSDTPQQD NDQLNSEEKK
Clone:	1E2
Isotype:	IgG1
Cross-Reactivity:	Human
Characteristics:	Antibody Reactive Against Recombinant Protein.

## Target Details

---

Target:	PRRX1
Alternative Name:	PRRX1 ( <a href="#">PRRX1 Products</a> )
Background:	Full Gene Name: paired related homeobox 1 Synonyms: PHOX1,PMX1,PRX1
Gene ID:	5396
NCBI Accession:	<a href="#">NM_022716</a>

## Application Details

---

Application Notes:	Optimal working dilution should be determined by the investigator.
Restrictions:	For Research Use only

## Handling

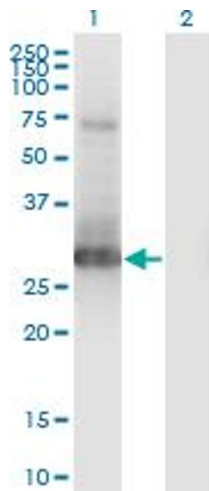
---

Buffer:	In 1x PBS, pH 7.4
Handling Advice:	Aliquot to avoid repeated freezing and thawing.
Storage:	-20 °C
Storage Comment:	Store at -20°C or lower. Aliquot to avoid repeated freezing and thawing.

## Publications

---

Product cited in:	Hirata, Sugimachi, Takahashi, Ueda, Sakimura, Uchi, Kurashige, Takano, Nanbara, Komatsu, Saito, Shinden, Iguchi, Eguchi, Atsumi, Sakamoto, Doi, Hirakawa, Honda, Mimori: "Downregulation of PRRX1 Confers Cancer Stem Cell-Like Properties and Predicts Poor Prognosis in Hepatocellular Carcinoma." in: <b>Annals of surgical oncology</b> , (2014) ( <a href="#">PubMed</a> ).
-------------------	--

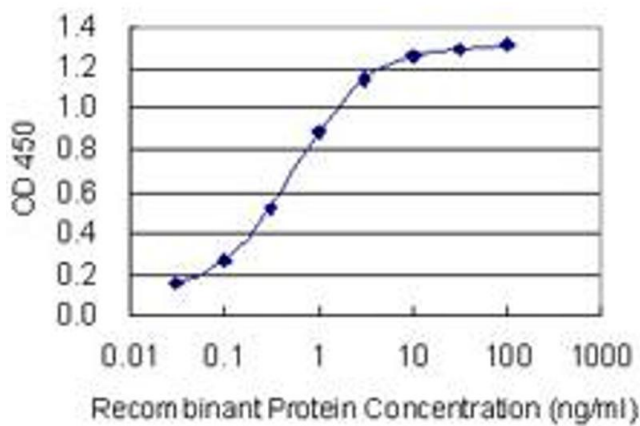


### Western Blotting

**Image 1.** Western Blot analysis of PRRX1 expression in transfected 293T cell line by PRRX1 monoclonal antibody (M01), clone 1E2.

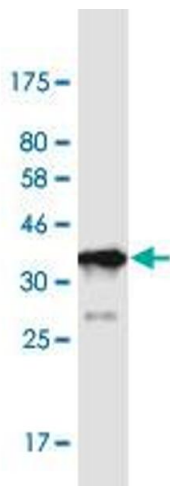
Lane 1: PRRX1 transfected lysate (Predicted MW: 24.4 kDa).

Lane 2: Non-transfected lysate.



### ELISA

**Image 2.** Detection limit for recombinant GST tagged PRRX1 is 0.03 ng/ml as a capture antibody.



### Western Blotting

**Image 3.** Western Blot detection against Immunogen (35.64 kDa).