



Datasheet for ABIN1327193
anti-PDCD1LG2 antibody (AA 22-111)



[Go to Product page](#)

3 Images

Overview

Quantity:	100 µg
Target:	PDCD1LG2
Binding Specificity:	AA 22-111
Reactivity:	Human
Host:	Mouse
Clonality:	Monoclonal
Conjugate:	This PDCD1LG2 antibody is un-conjugated
Application:	Western Blotting (WB), ELISA

Product Details

Purpose:	Mouse monoclonal antibody raised against a partial recombinant PDCD1LG2.
Immunogen:	PDCD1LG2 (NP_079515.1, 22 a.a. ~ 111 a.a) partial recombinant protein with GST tag. MW of the GST tag alone is 26 KDa.
Sequence:	TVTVPKELYI IEHGSNVTLE CNFDTGSHVN LGAITASLQK VENDTSPHRE RATLLEEQLP LGKASFHIPQ VQVRDEGQYQ CIIYGVAWD
Clone:	7D5
Isotype:	IgG2a
Cross-Reactivity:	Human
Characteristics:	Antibody Reactive Against Recombinant Protein.

Target Details

Target:	PDCD1LG2
Alternative Name:	PDCD1LG2 (PDCD1LG2 Products)
Background:	Full Gene Name: programmed cell death 1 ligand 2 Synonyms: B7DC,Btdc,CD273,MGC142238,MGC142240,PD-L2,PDCD1L2,PDL2,bA574F11.2
Gene ID:	80380
NCBI Accession:	NM_025239

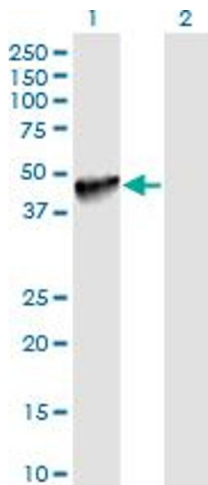
Application Details

Application Notes:	Optimal working dilution should be determined by the investigator.
Restrictions:	For Research Use only

Handling

Buffer:	In 1x PBS, pH 7.4
Handling Advice:	Aliquot to avoid repeated freezing and thawing.
Storage:	-20 °C
Storage Comment:	Store at -20°C or lower. Aliquot to avoid repeated freezing and thawing.

Images

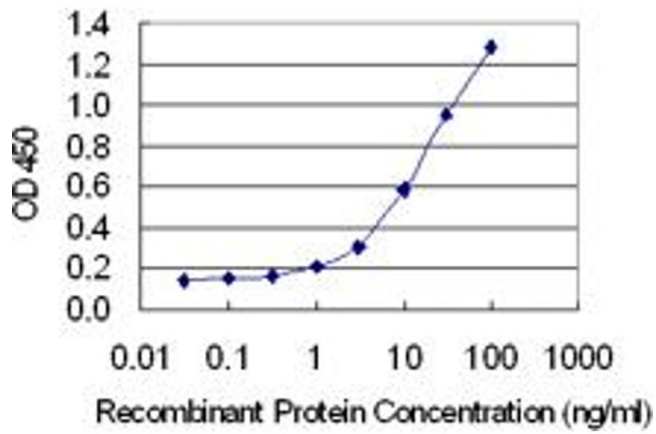


Western Blotting

Image 1. Western Blot analysis of PDCD1LG2 expression in transfected 293T cell line by PDCD1LG2 monoclonal antibody (M06), clone 7D5.

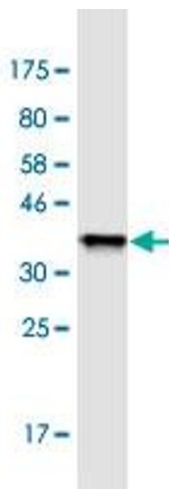
Lane 1: PDCD1LG2 transfected lysate (Predicted MW: 30.03 KDa).

Lane 2: Non-transfected lysate.



ELISA

Image 2. Detection limit for recombinant GST tagged PDCD1LG2 is 0.3 ng/ml as a capture antibody.



Western Blotting

Image 3. Western Blot detection against Immunogen (35.64 kDa).