



[Go to Product page](#)

Datasheet for ABIN1327194  
**anti-TET1 antibody (AA 2038-2136)**

2 Images

Overview

Quantity:	100 µg
Target:	TET1
Binding Specificity:	AA 2038-2136
Reactivity:	Human
Host:	Mouse
Clonality:	Monoclonal
Conjugate:	This TET1 antibody is un-conjugated
Application:	Western Blotting (WB), ELISA

Product Details

Purpose:	Mouse monoclonal antibody raised against a partial recombinant TET1.
Immunogen:	TET1 (NP_085128.1, 2038 a.a. ~ 2136 a.a) partial recombinant protein with GST tag. MW of the GST tag alone is 26 KDa.
Sequence:	RNHPTRLSLV FYQHKNLNKP QHGFELNLIK FEAKEAKNKK MKASEQKDQA ANEGPEQSSE VNELNQIPSH KALTLTHDNV VTVSPYALTH VAGPYNHWV
Clone:	4F4
Isotype:	IgG2a
Cross-Reactivity:	Human
Characteristics:	Antibody Reactive Against Recombinant Protein.

## Target Details

Target:	TET1
Alternative Name:	TET1 ( <a href="#">TET1 Products</a> )
Background:	Full Gene Name: tet oncogene 1 Synonyms: CXXC6,FLJ10839,FLJ41442,KIAA1676,LCX,bA119F7.1
Gene ID:	80312
NCBI Accession:	<a href="#">NM_030625</a>
Pathways:	<a href="#">Stem Cell Maintenance</a> , <a href="#">Warburg Effect</a>

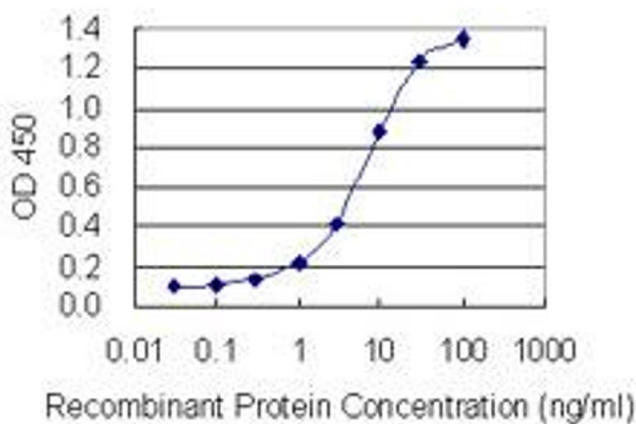
## Application Details

Application Notes:	Optimal working dilution should be determined by the investigator.
Restrictions:	For Research Use only

## Handling

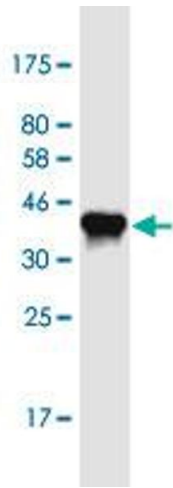
Buffer:	In 1x PBS, pH 7.4
Handling Advice:	Aliquot to avoid repeated freezing and thawing.
Storage:	-20 °C
Storage Comment:	Store at -20°C or lower. Aliquot to avoid repeated freezing and thawing.

## Images



### ELISA

**Image 1.** Detection limit for recombinant GST tagged TET1 is 0.3 ng/ml as a capture antibody.



### Western Blotting

**Image 2.** Western Blot detection against Immunogen (36.63 kDa).