



[Go to Product page](#)

Datasheet for ABIN1327195  
**anti-RAI1 antibody (AA 1-101)**

3 Images

Overview

Quantity:	100 µg
Target:	RAI1
Binding Specificity:	AA 1-101
Reactivity:	Human
Host:	Mouse
Clonality:	Monoclonal
Conjugate:	This RAI1 antibody is un-conjugated
Application:	ELISA, Western Blotting (WB)

Product Details

Purpose:	Mouse monoclonal antibody raised against a partial recombinant RAI1.
Immunogen:	RAI1 (NP_109590.3, 1 a.a. ~ 101 a.a) partial recombinant protein with GST tag. MW of the GST tag alone is 26 KDa.
Sequence:	MQSFRERC GF HGKQQNYQQT SQETSRL ENY RQPSQAGL SC DRQRL LAKDY YNPQPYP SYE GGAGTPSGTA AAVAADKYHR GSKALPTQQG LQGRPAFPGY G
Clone:	6H5
Isotype:	IgG2a
Cross-Reactivity:	Human
Characteristics:	Antibody Reactive Against Recombinant Protein.

## Target Details

Target:	RAI1
Alternative Name:	RAI1 ( <a href="#">RAI1 Products</a> )
Background:	Full Gene Name: retinoic acid induced 1 Synonyms: DKFZp434A139,KIAA1820,MGC12824,SMCR,SMS
Gene ID:	10743
NCBI Accession:	<a href="#">NM_030665</a>

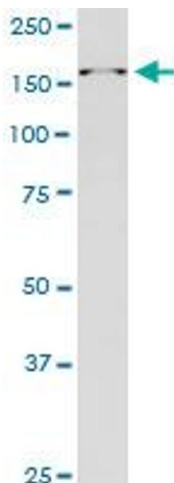
## Application Details

Application Notes:	Optimal working dilution should be determined by the investigator.
Restrictions:	For Research Use only

## Handling

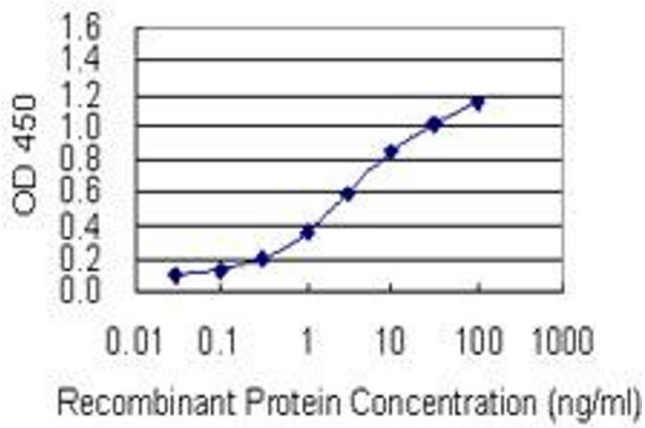
Buffer:	In 1x PBS, pH 7.4
Handling Advice:	Aliquot to avoid repeated freezing and thawing.
Storage:	-20 °C
Storage Comment:	Store at -20°C or lower. Aliquot to avoid repeated freezing and thawing.

## Images



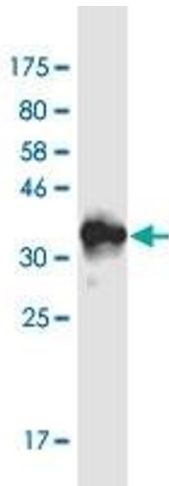
### Western Blotting

**Image 1.** RAI1 monoclonal antibody (M01), clone 6H5.  
Western Blot analysis of RAI1 expression in HeLa S3 NE.



### ELISA

**Image 2.** Detection limit for recombinant GST tagged RAI1 is 0.1 ng/ml as a capture antibody.



### Western Blotting

**Image 3.** Western Blot detection against Immunogen (36.85 kDa).