



[Go to Product page](#)

Datasheet for ABIN1327211  
**anti-JSRP1 antibody (AA 1-100)**

2 Images

Overview

|                      |                                      |
|----------------------|--------------------------------------|
| Quantity:            | 100 µg                               |
| Target:              | JSRP1                                |
| Binding Specificity: | AA 1-100                             |
| Reactivity:          | Human                                |
| Host:                | Mouse                                |
| Clonality:           | Monoclonal                           |
| Conjugate:           | This JSRP1 antibody is un-conjugated |
| Application:         | ELISA, Western Blotting (WB)         |

Product Details

|                   |  |
|-------------------|--|
| Purpose:          | Mouse monoclonal antibody raised against a partial recombinant JSRP1.  |
| Immunogen:        | JSRP1 (NP_653217.1, 1 a.a. ~ 100 a.a) partial recombinant protein with GST tag. MW of the GST tag alone is 26 KDa. |
| Sequence:         | MSMTTRAWEE LDGGLGSCQA LEDHSALAET QEDRASATPR LADSGSVPHD SQVAEGPSVD<br>TRPKKMEKEP AARGTPGTGK ERLKAGASPR SVPARKKAQT   |
| Clone:            | 6A9  |
| Isotype:          | IgG2a  |
| Cross-Reactivity: | Human  |
| Characteristics:  | Antibody Reactive Against Recombinant Protein.   |

## Target Details

|                   |   |
|-------------------|---|
| Target:           | JSRP1   |
| Alternative Name: | JSRP1 ( <a href="#">JSRP1 Products</a> )  |
| Background:       | Full Gene Name: junctional sarcoplasmic reticulum protein 1<br>Synonyms: FLJ32416,JP-45 |
| Gene ID:          | 126306  |
| NCBI Accession:   | <a href="#">NM_144616</a>   |

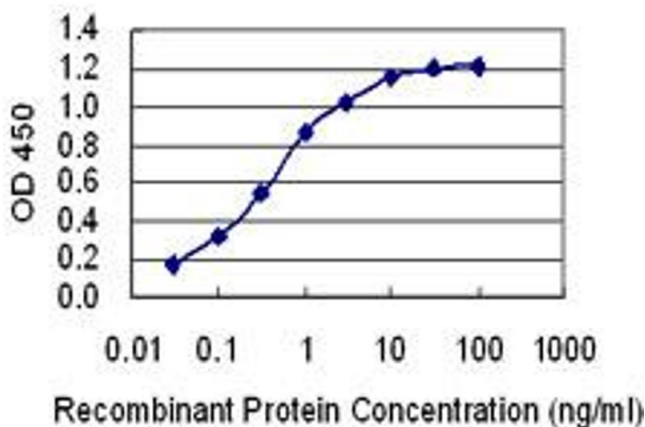
## Application Details

|                    |  |
|--------------------|--|
| Application Notes: | Optimal working dilution should be determined by the investigator. |
| Restrictions:      | For Research Use only  |

## Handling

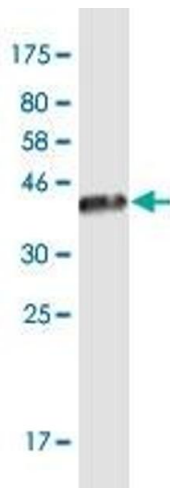
|                  |  |
|------------------|--|
| Buffer:          | In 1x PBS, pH 7.4  |
| Handling Advice: | Aliquot to avoid repeated freezing and thawing.                          |
| Storage:         | -20 °C   |
| Storage Comment: | Store at -20°C or lower. Aliquot to avoid repeated freezing and thawing. |

## Images



### ELISA

**Image 1.** Detection limit for recombinant GST tagged JSRP1 is 0.03 ng/ml as a capture antibody.



### Western Blotting

**Image 2.** Western Blot detection against Immunogen (36.74 kDa).