



[Go to Product page](#)

Datasheet for ABIN1327224
anti-POTED antibody (AA 485-584)

3 Images

Overview

Quantity:	100 µg
Target:	POTED
Binding Specificity:	AA 485-584
Reactivity:	Human
Host:	Mouse
Clonality:	Monoclonal
Conjugate:	This POTED antibody is un-conjugated
Application:	Western Blotting (WB), ELISA

Product Details

Purpose:	Mouse monoclonal antibody raised against a partial recombinant POTED.
Immunogen:	POTED (NP_778146.1, 485 a.a. ~ 584 a.a) partial recombinant protein with GST tag. MW of the GST tag alone is 26 KDa.
Sequence:	NTGISQDEIL TNKQKQIEVA EQKMNSELSL SHKKEEDLLR ENSVLQEEIA VLRLELDETK HQNQLRENKI LEEIESVKEK TDKLLRAMQL NEEALTKTNI
Clone:	6D9
Isotype:	IgG2b
Cross-Reactivity:	Human
Characteristics:	Antibody Reactive Against Recombinant Protein.

Target Details

Target:	POTED
Alternative Name:	POTED (POTED Products)
Background:	Full Gene Name: POTE ankyrin domain family, member D Synonyms: A26B3,ANKRD21,POTE,POTE-21,POTE21
Gene ID:	317754
NCBI Accession:	NM_174981

Application Details

Application Notes:	Optimal working dilution should be determined by the investigator.
Restrictions:	For Research Use only

Handling

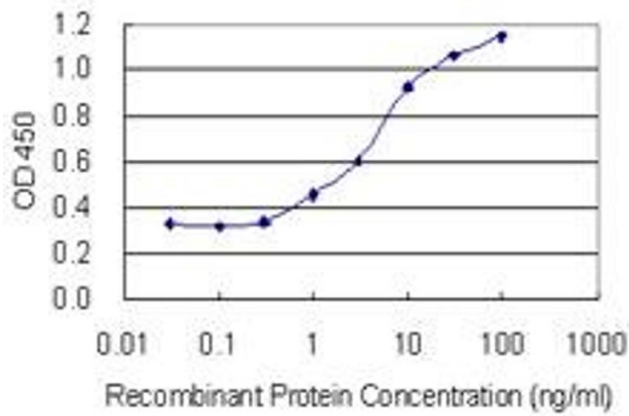
Buffer:	In 1x PBS, pH 7.4
Handling Advice:	Aliquot to avoid repeated freezing and thawing.
Storage:	-20 °C
Storage Comment:	Store at -20°C or lower. Aliquot to avoid repeated freezing and thawing.

Images



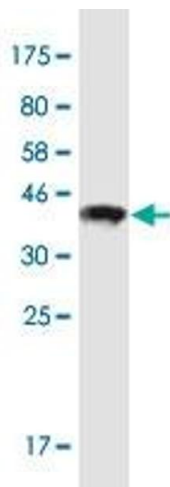
Western Blotting

Image 1. POTED monoclonal antibody (M05), clone 6D9.
Western Blot analysis of POTED expression in HepG2.



ELISA

Image 2. Detection limit for recombinant GST tagged POTES is 0.3 ng/ml as a capture antibody.



Western Blotting

Image 3. Western Blot detection against Immunogen (36.74 kDa).