



[Go to Product page](#)

Datasheet for ABIN1327225
anti-CAGE1 antibody (AA 2-100)

3 Images

Overview

Quantity:	100 µg
Target:	CAGE1
Binding Specificity:	AA 2-100
Reactivity:	Human
Host:	Mouse
Clonality:	Monoclonal
Conjugate:	This CAGE1 antibody is un-conjugated
Application:	ELISA, Western Blotting (WB)

Product Details

Purpose:	Mouse monoclonal antibody raised against a partial recombinant CAGE1.
Immunogen:	CAGE1 (NP_786887.1, 2 a.a. ~ 100 a.a) partial recombinant protein with GST tag. MW of the GST tag alone is 26 KDa.
Sequence:	NKDYQKFWSS PSDPVHFEVD TSHEKVESMS ESDTMNVSNL SQGVMLSHSP ICMETTGTTC DLPQNEIKNF ERENEYESTL CEDAYGTLDN LLNDNNIEN
Clone:	3H8
Isotype:	IgG2a
Cross-Reactivity:	Human
Characteristics:	Antibody Reactive Against Recombinant Protein.

Target Details

Target:	CAGE1
Alternative Name:	CAGE1 (CAGE1 Products)
Background:	Full Gene Name: cancer antigen 1 Synonyms: CTAG3,FLJ40441,bA69L16.7
Gene ID:	285782
NCBI Accession:	NM_175745

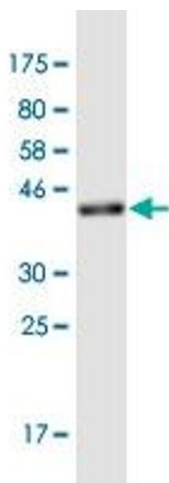
Application Details

Application Notes:	Optimal working dilution should be determined by the investigator.
Restrictions:	For Research Use only

Handling

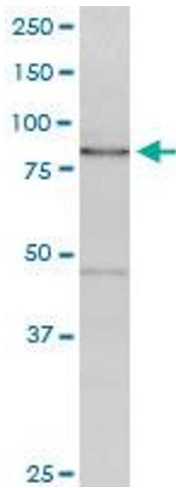
Buffer:	In 1x PBS, pH 7.4
Handling Advice:	Aliquot to avoid repeated freezing and thawing.
Storage:	-20 °C
Storage Comment:	Store at -20°C or lower. Aliquot to avoid repeated freezing and thawing.

Images



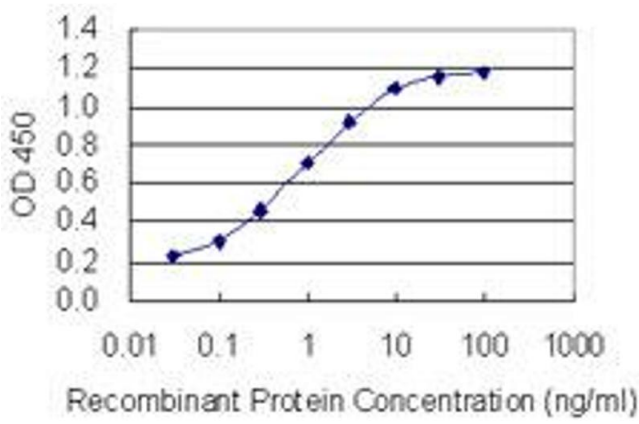
Western Blotting

Image 1. Western Blot detection against Immunogen (36.63 kDa).



Western Blotting

Image 2. CAGE1 monoclonal antibody (M01), clone 3H8. Western Blot analysis of CAGE1 expression in MCF-7.



ELISA

Image 3. Detection limit for recombinant GST tagged CAGE1 is 0.03 ng/ml as a capture antibody.