



[Go to Product page](#)

Datasheet for ABIN1327232

anti-IGKV1OR2-108 antibody (AA 1-95)

2 Images

Overview

Quantity:	100 µg
Target:	IGKV1OR2-108
Binding Specificity:	AA 1-95
Reactivity:	Human
Host:	Mouse
Clonality:	Monoclonal
Conjugate:	This IGKV1OR2-108 antibody is un-conjugated
Application:	Immunofluorescence (IF), ELISA

Product Details

Purpose:	Mouse monoclonal antibody raised against a partial recombinant IGKV1OR2-108.
Immunogen:	IGKV1OR2-108 (CAA36171.1, 1 a.a. ~ 95 a.a) partial recombinant protein with GST tag. MW of the GST tag alone is 26 KDa.
Sequence:	DIQVTQSPSS LSASVGDRVT ITCRASQGIS NGLSWYQQKP GQAPTLIIYA ASSLQSGVPS RFSGSGSGTD FTLTISSLQP EDVATYYCLQ DYTTP
Clone:	3A11
Isotype:	IgG2a
Cross-Reactivity:	Human
Characteristics:	Antibody Reactive Against Recombinant Protein.

Target Details

Target:	IGKV1OR2-108
Alternative Name:	IGKV1OR2-108 (IGKV1OR2-108 Products)
Background:	Full Gene Name: immunoglobulin kappa variable 1/OR2-108 (non-functional) Synonyms: IGKV1OR2108,IGO1
Gene ID:	28862

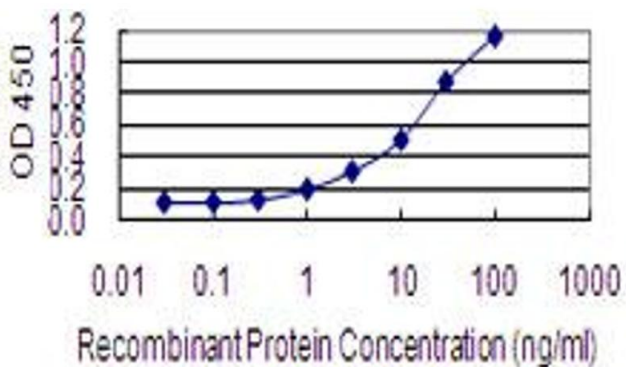
Application Details

Application Notes:	Optimal working dilution should be determined by the investigator.
Restrictions:	For Research Use only

Handling

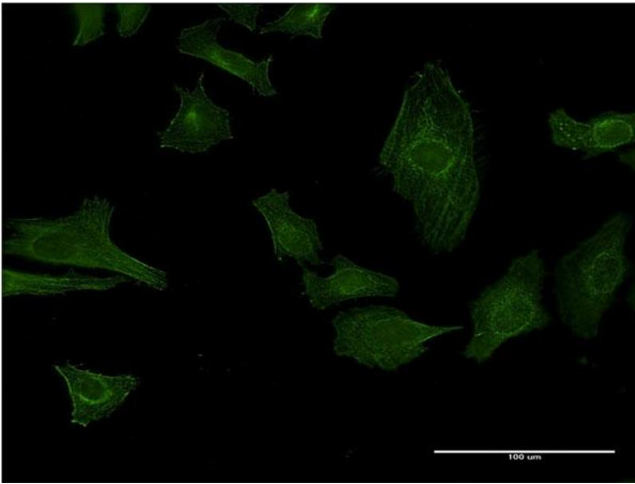
Buffer:	In 1x PBS, pH 7.4
Handling Advice:	Aliquot to avoid repeated freezing and thawing.
Storage:	-20 °C
Storage Comment:	Store at -20°C or lower. Aliquot to avoid repeated freezing and thawing.

Images



ELISA

Image 1. Detection limit for recombinant GST tagged IGKV1OR2-108 is 0.3 ng/ml as a capture antibody.



Immunofluorescence

Image 2. Immunofluorescence of monoclonal antibody to IGKV10R2-108 on HeLa cell. [antibody concentration 10 ug/ml]