

Datasheet for ABIN1327261
anti-CRELD1 antibody (AA 1-422)



[Go to Product page](#)

1 Image

Overview

Quantity:	100 µL
Target:	CRELD1
Binding Specificity:	AA 1-422
Reactivity:	Human
Host:	Rabbit
Clonality:	Polyclonal
Conjugate:	This CRELD1 antibody is un-conjugated
Application:	Western Blotting (WB)

Product Details

Purpose:	Rabbit polyclonal antibody raised against a full-length human CRELD1 protein.
Immunogen:	CRELD1 (NP_001026887.1, 1 a.a. ~ 422 a.a) full-length human protein.
Sequence:	MAPWPPKGLV PAVLWGLSLF LNLPGIWLQ PSPPPQSSPP PQPHPCHTCR GLVDSFNKGL ERTIRDNFGG GNTAWEEENL SKYKDSETRL VEVLEGVCSK SDFECHRLL ESEELVESWW FHKQEQAPDL FQWLCSDSLK LCCPAGTFGP SCLPCPGGTE RPCGGYGQCE GEGTRGGSGH CDCQAGYGG EACGQCGLGYF EAERNASHLV CSACFGPCAR CSGPEESNCL QCKKGWALHH LKCVDIDECG TEGANCGADQ FCVNTEGSYE CRDCAKACLG CMGAGPGRCK KCSPGYQQVG SKCLDVDECE TEVCPGENKQ CENTEGGYRC ICAEGYKQME GICVKEQIPG AFPILDLTP ETTRRWKLGSP HPHSTYVKMK MQRDEATFPG LYGKQVAKLG SQSRQSDRGT RLIHSQQASS QR
Cross-Reactivity:	Human
Characteristics:	Antibody reactive against mammalian transfected lysate.

Target Details

Target:	CRELD1
Alternative Name:	CRELD1 (CRELD1 Products)
Background:	Full Gene Name: cysteine-rich with EGF-like domains 1 Synonyms: AVSD2,CIRRIN,DKFZp566D213
Gene ID:	78987
NCBI Accession:	NM_001031717

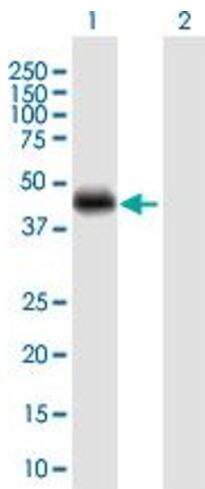
Application Details

Application Notes:	Optimal working dilution should be determined by the investigator.
Restrictions:	For Research Use only

Handling

Format:	Liquid
Buffer:	No additive
Preservative:	Without preservative
Handling Advice:	Aliquot to avoid repeated freezing and thawing.
Storage:	-20 °C
Storage Comment:	Store at -20°C or lower. Aliquot to avoid repeated freezing and thawing.

Images



Western Blotting

Image 1. Western Blot analysis of CRELD1 expression in transfected 293T cell line by CRELD1 MaxPab polyclonal antibody.

Lane 1: CRELD1 transfected lysate(45.9 KDa).

Lane 2: Non-transfected lysate.